



Mt Fuji World Heritage Site (Shigeru Ban Architects) 2016

ARCHITECTURE TOUR

JAPAN
2023

DRAWINGS AND IMAGES



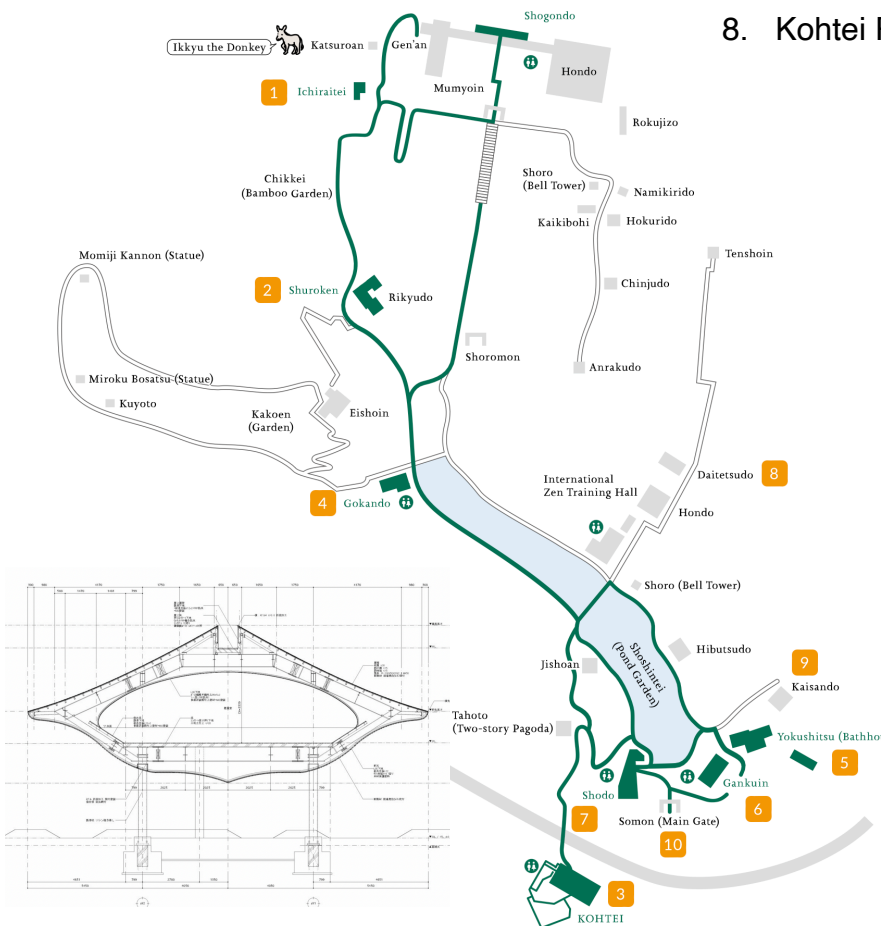
下瀬美術館 SIMOSE ART MUSEUM

4 Hiroshima Shigeru Ban 2023



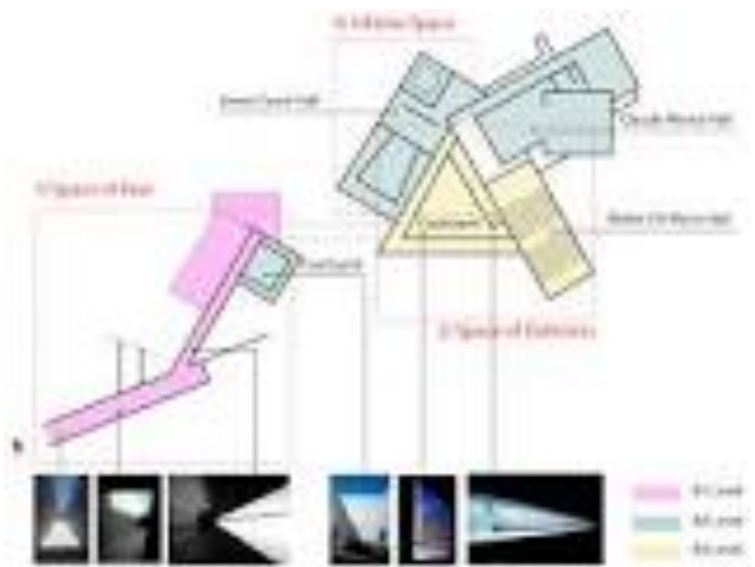
[ACCESS](#) [CONTACT US](#) [EN](#)

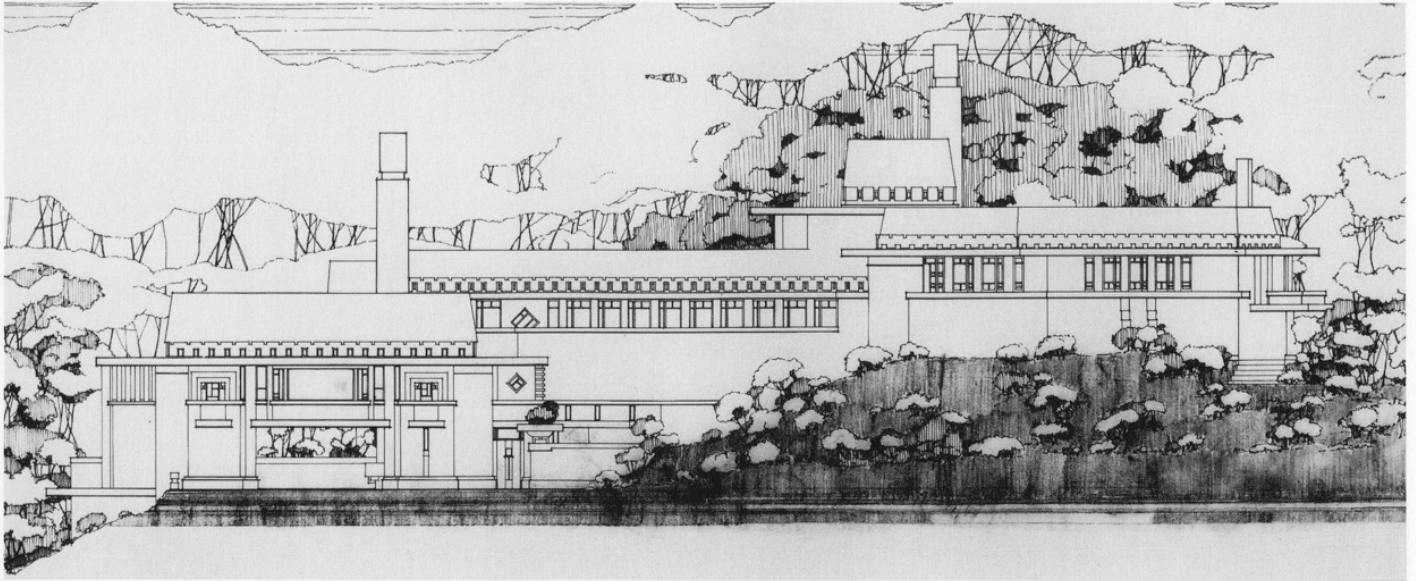
8. Kohtei Pavilion Hiroshima Sandwich 2016





11 Chichu Art Museum Tadao Ando 2004

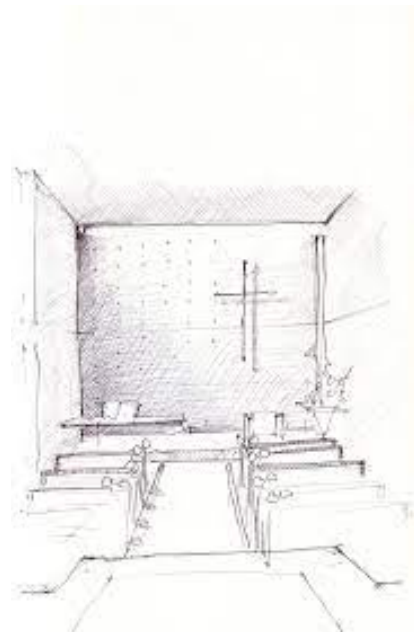
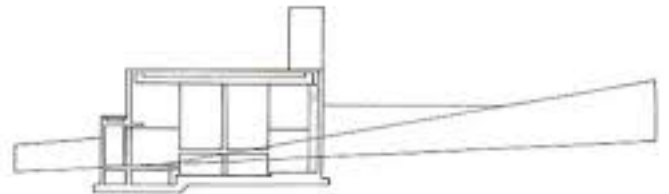
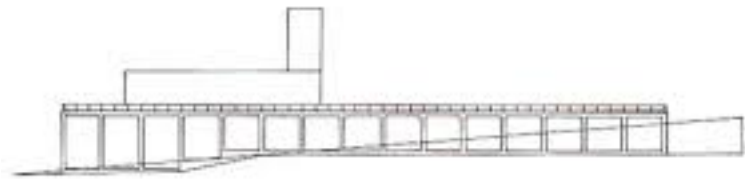
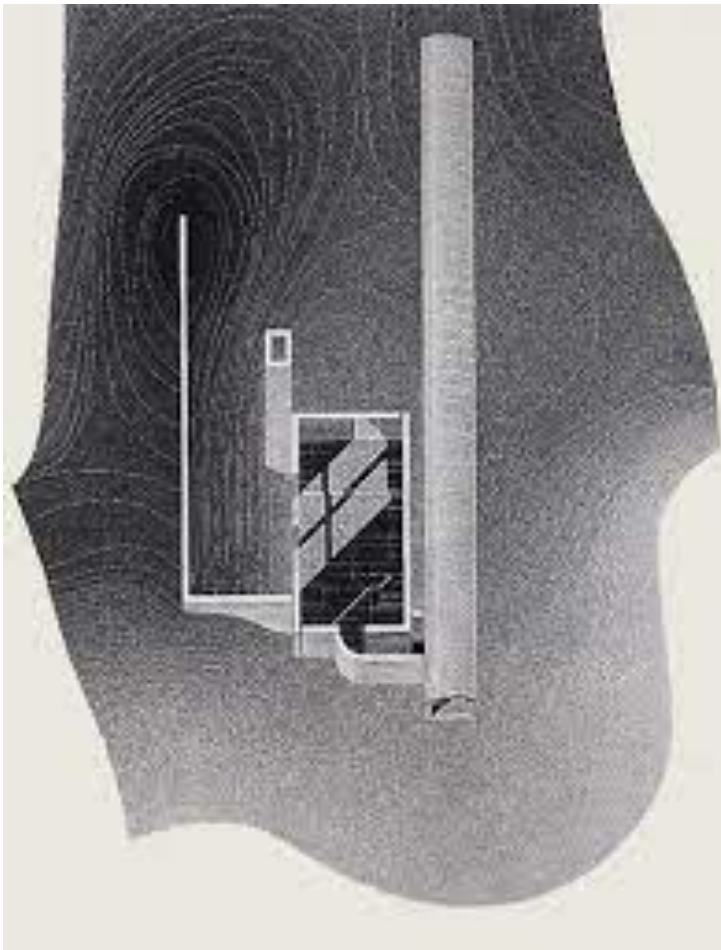




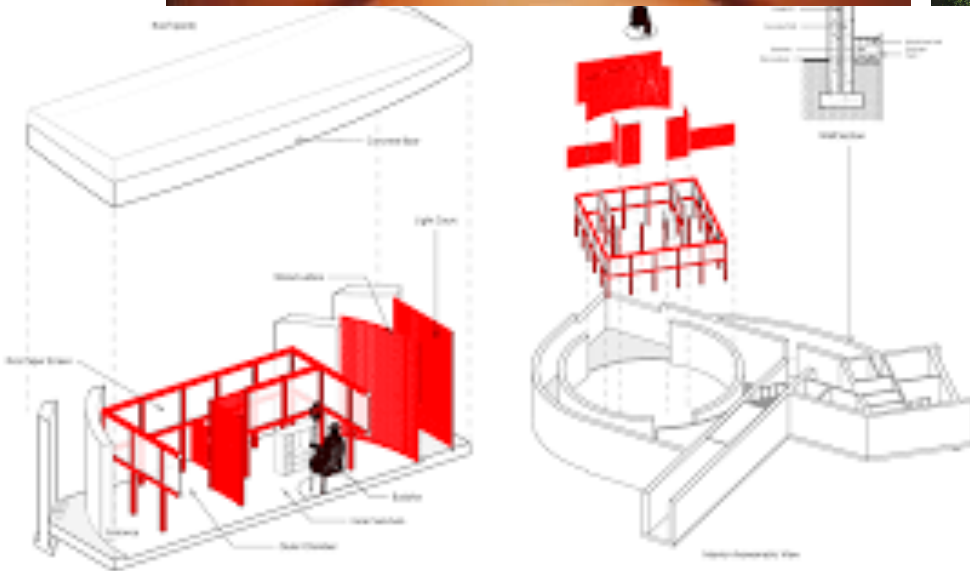
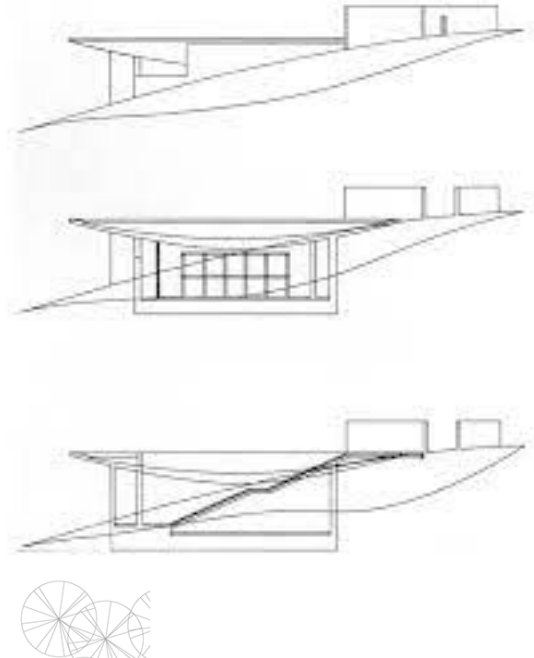
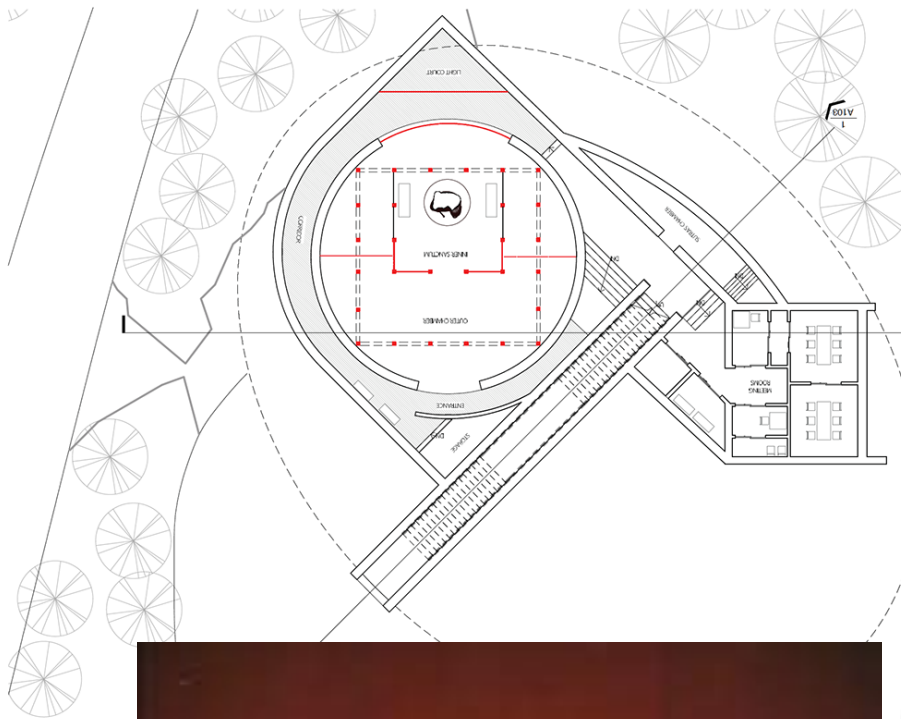
27. Tazaemon Yamamura house, Ashiya, Japan, 1918. Courtesy of Masami Tanigawa

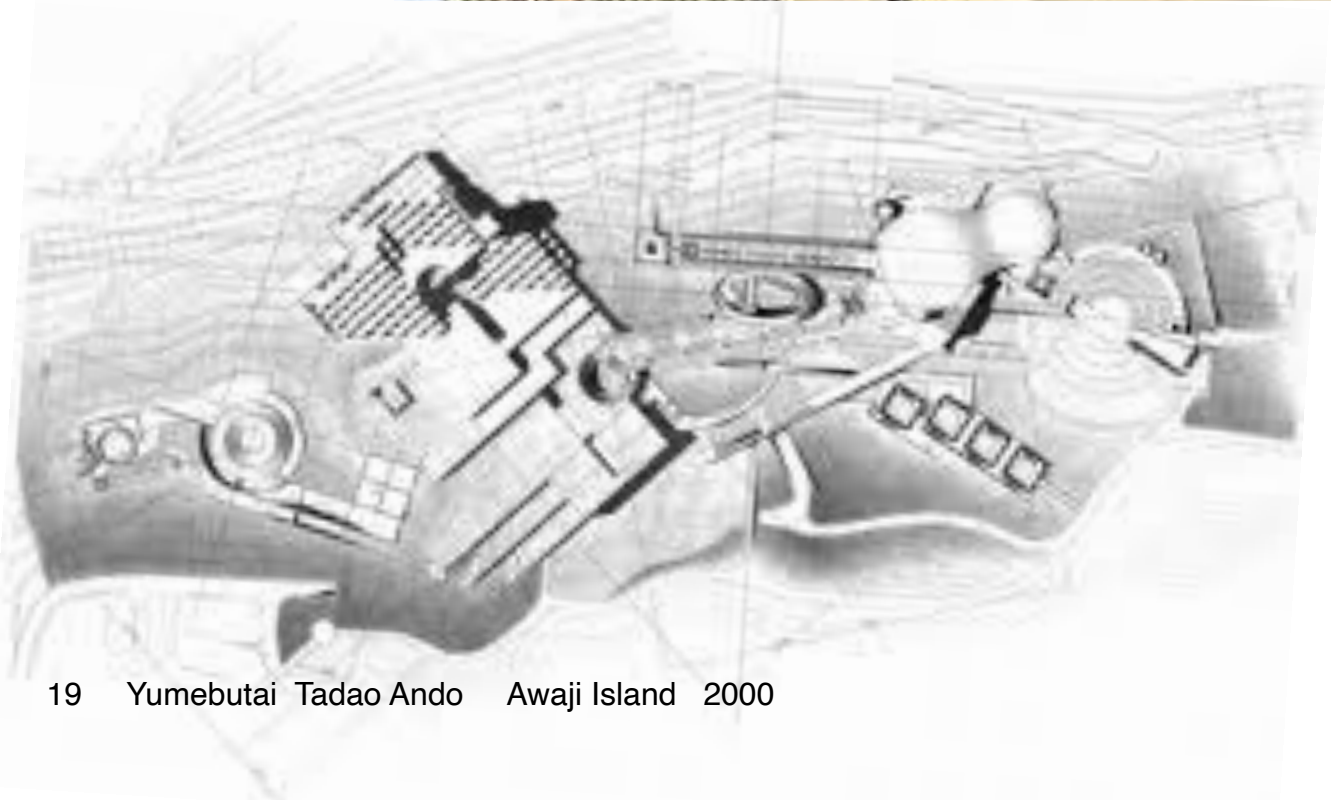
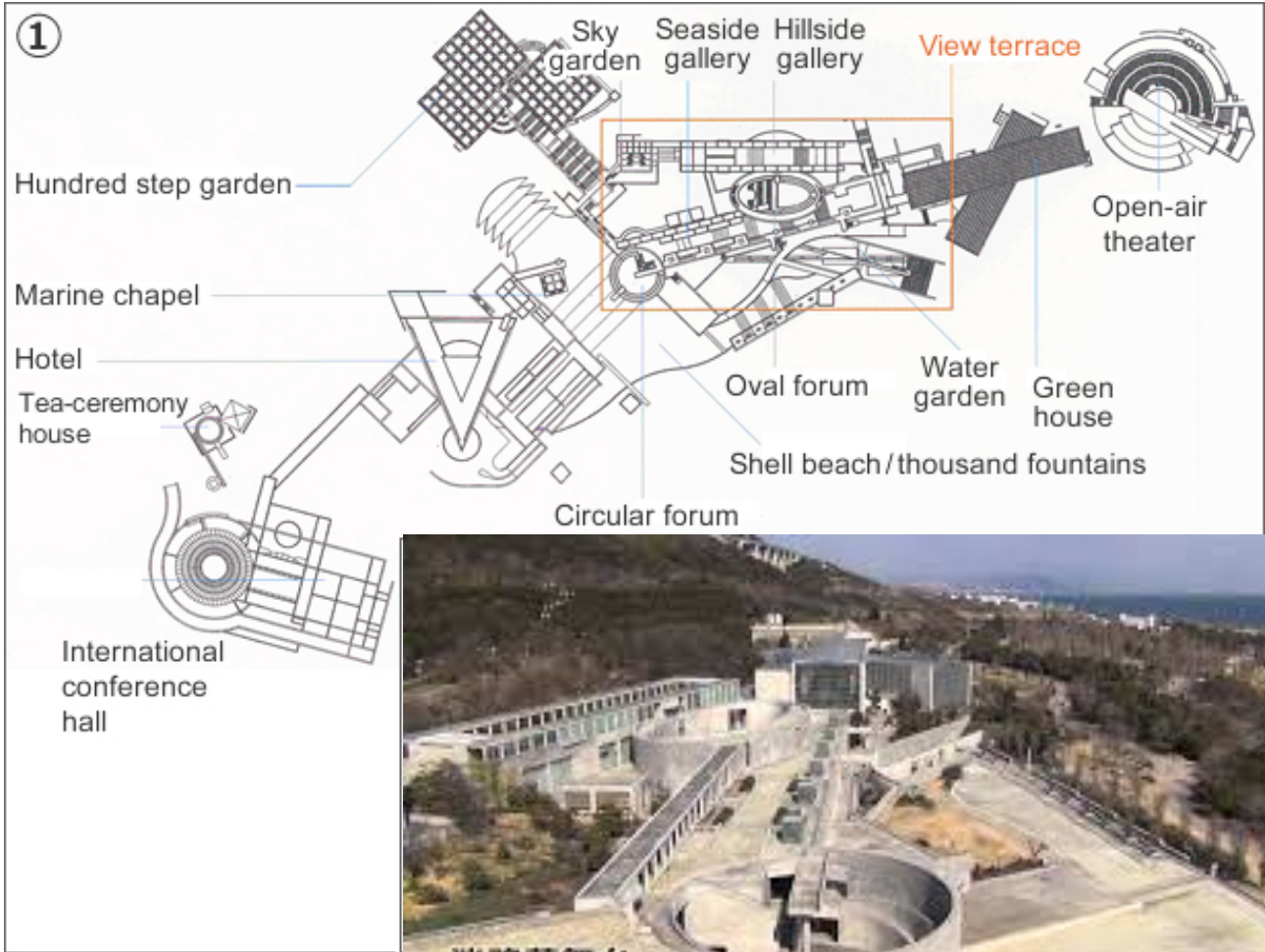


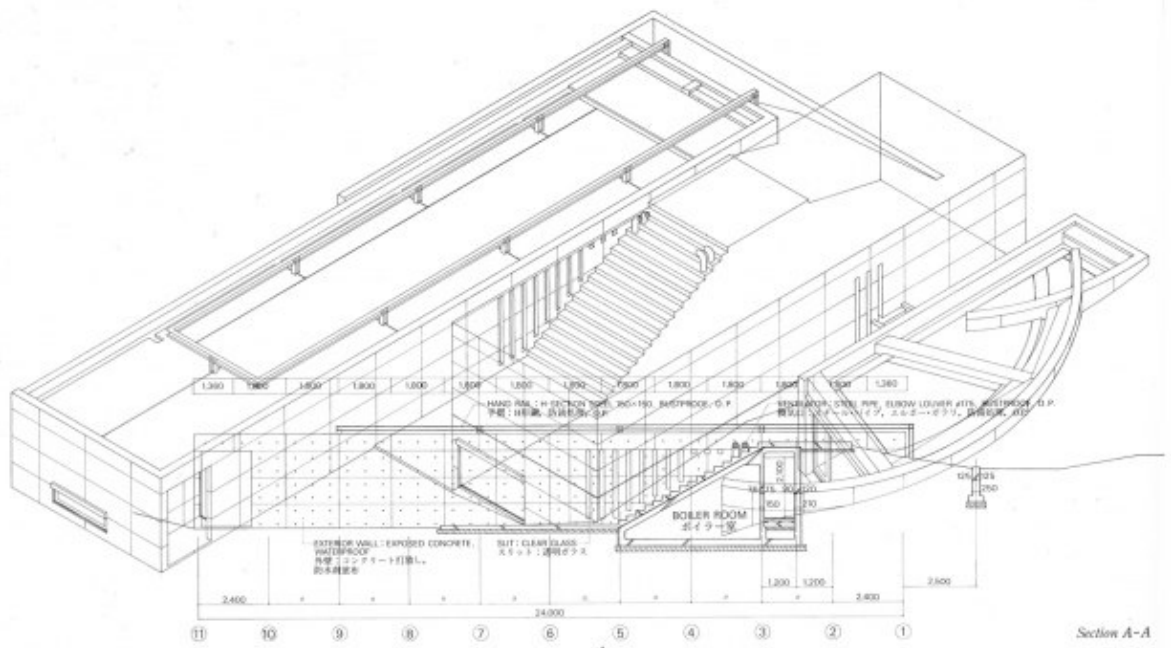
15 Tazaemon Yamamura House Frank Lloyd Wright. 1924



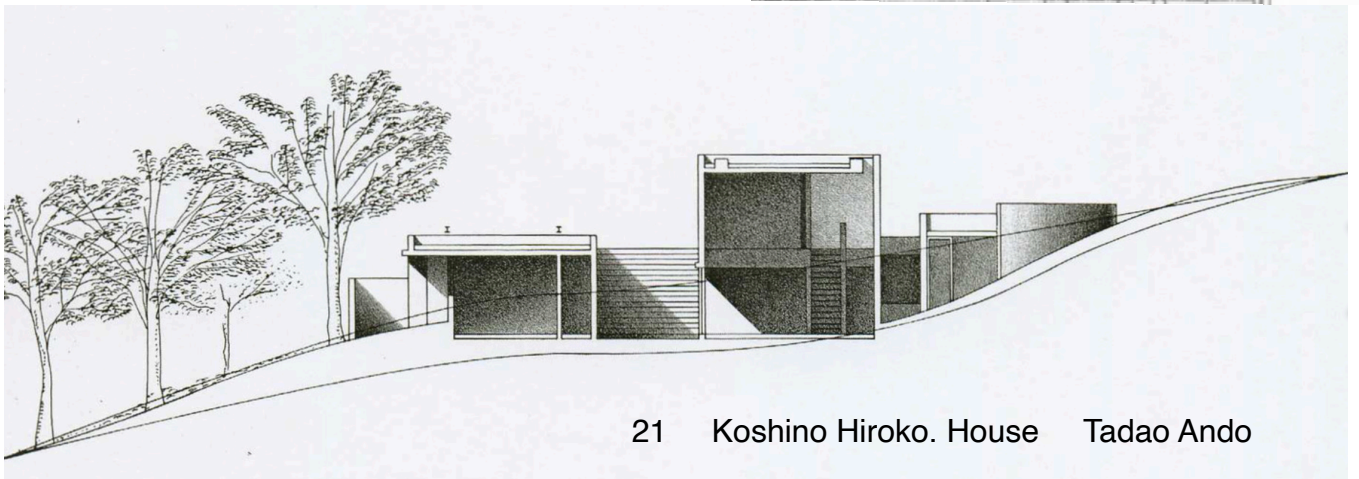
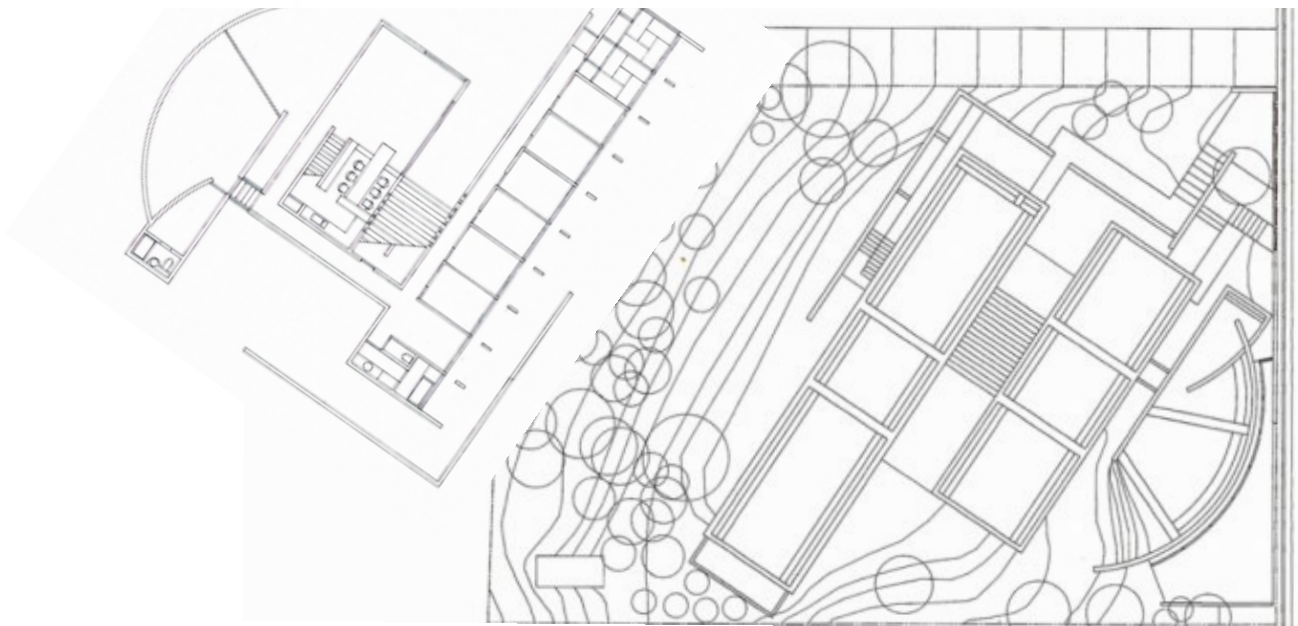
17 Chapel Mountain Rokko Tadao Ando 2004



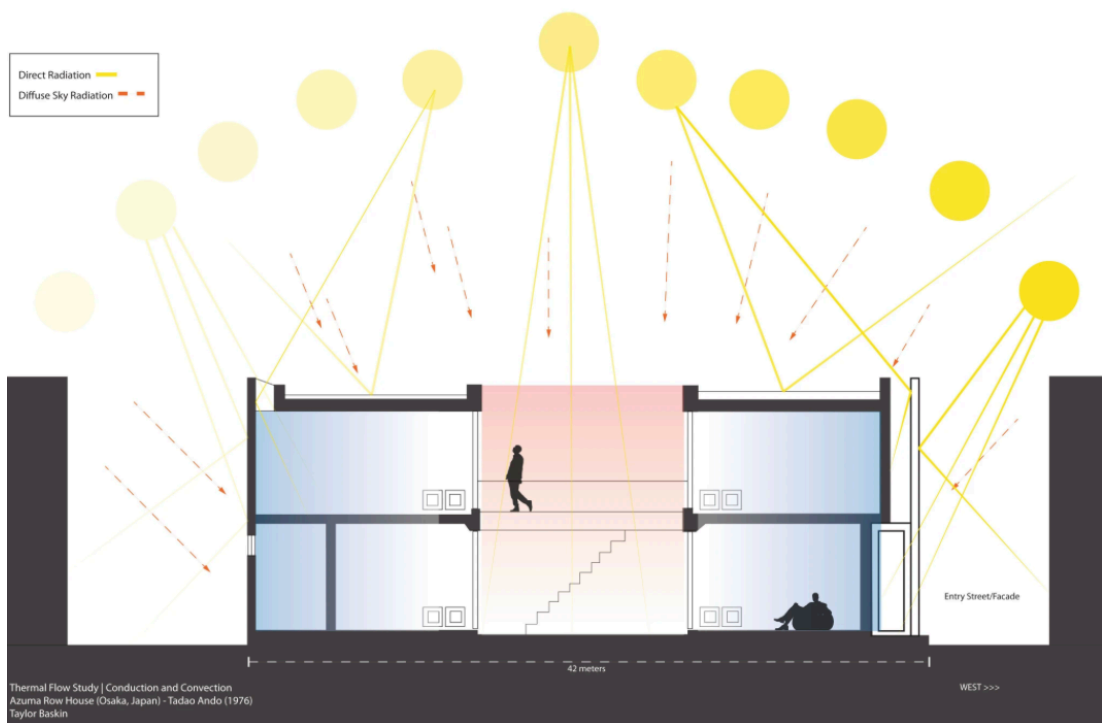
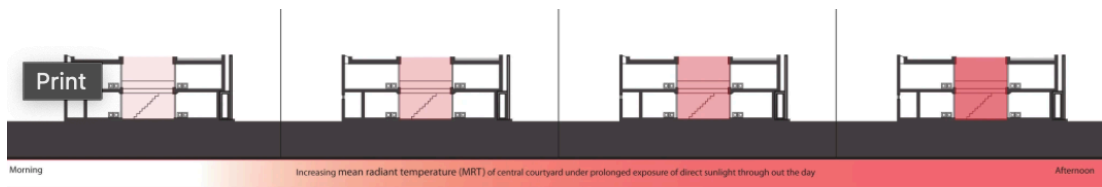
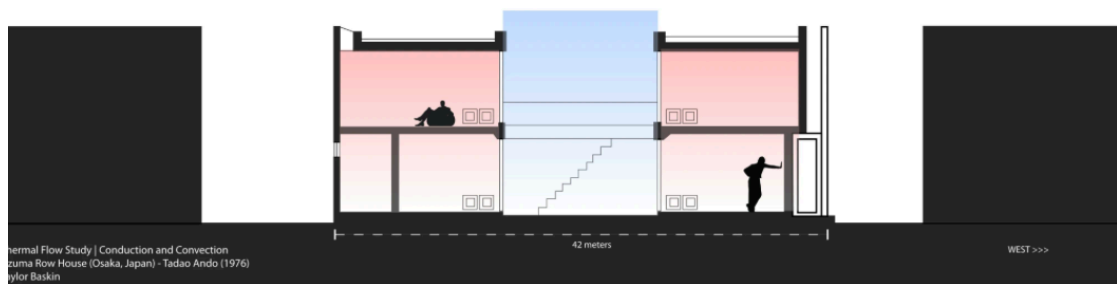
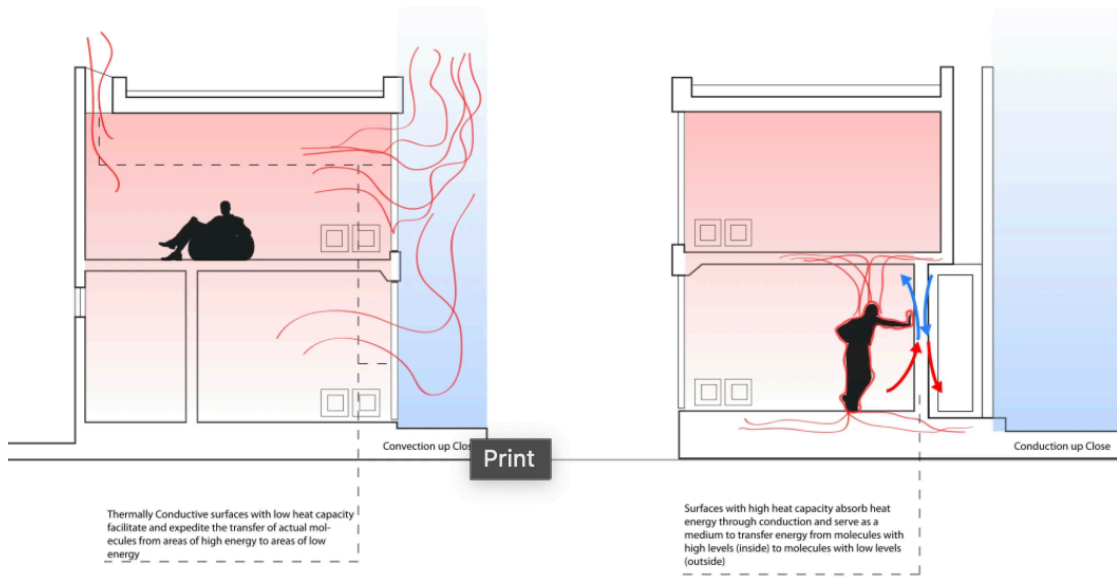


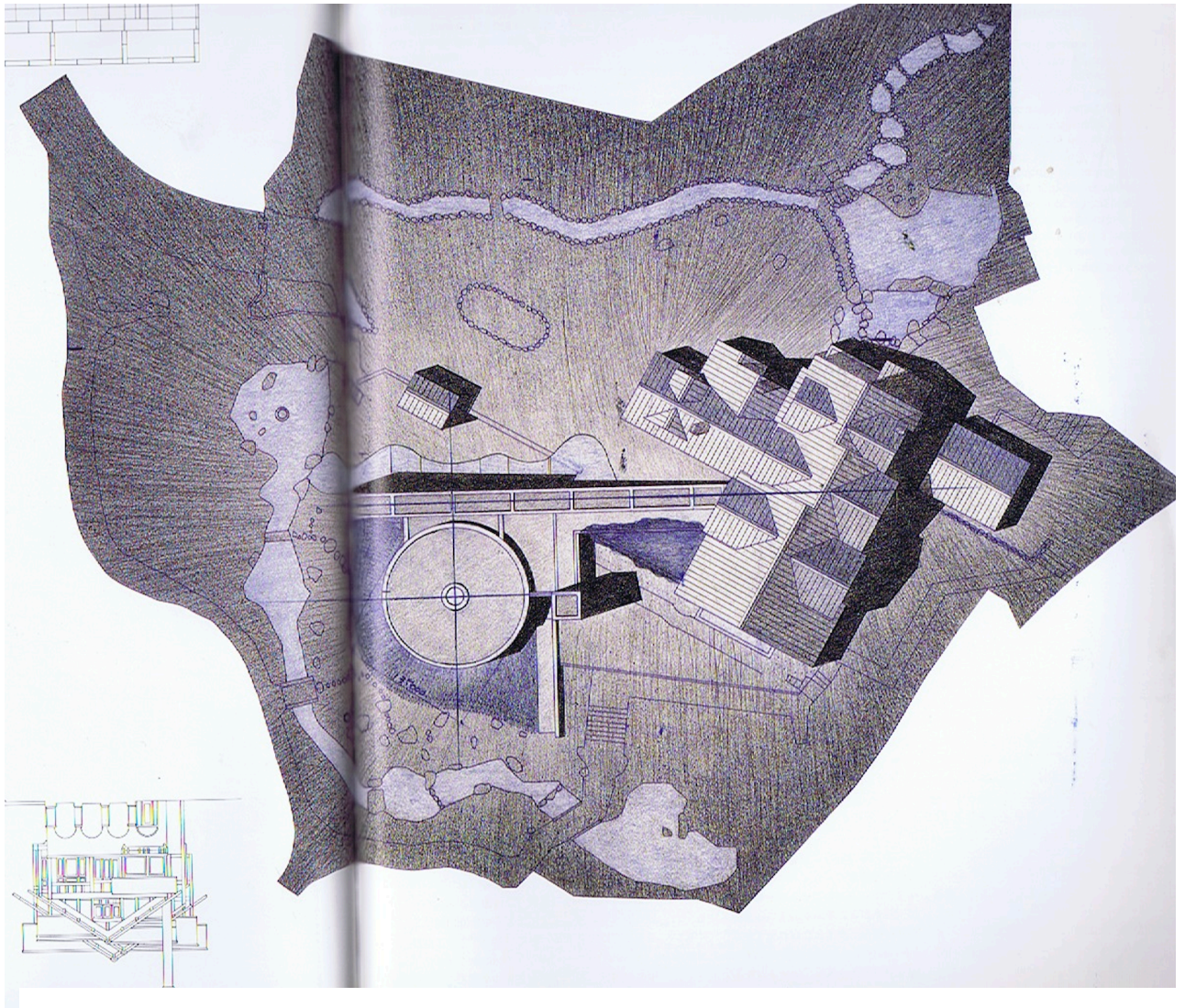
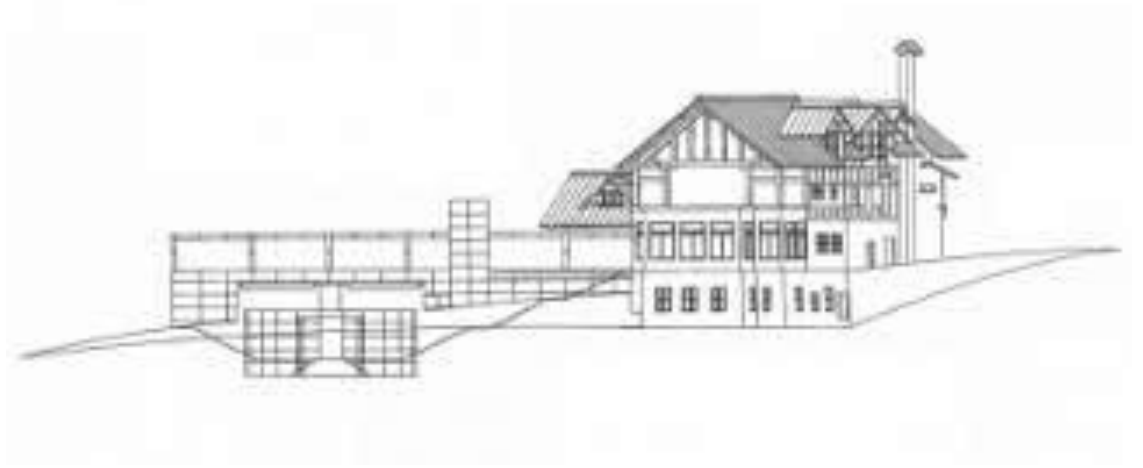


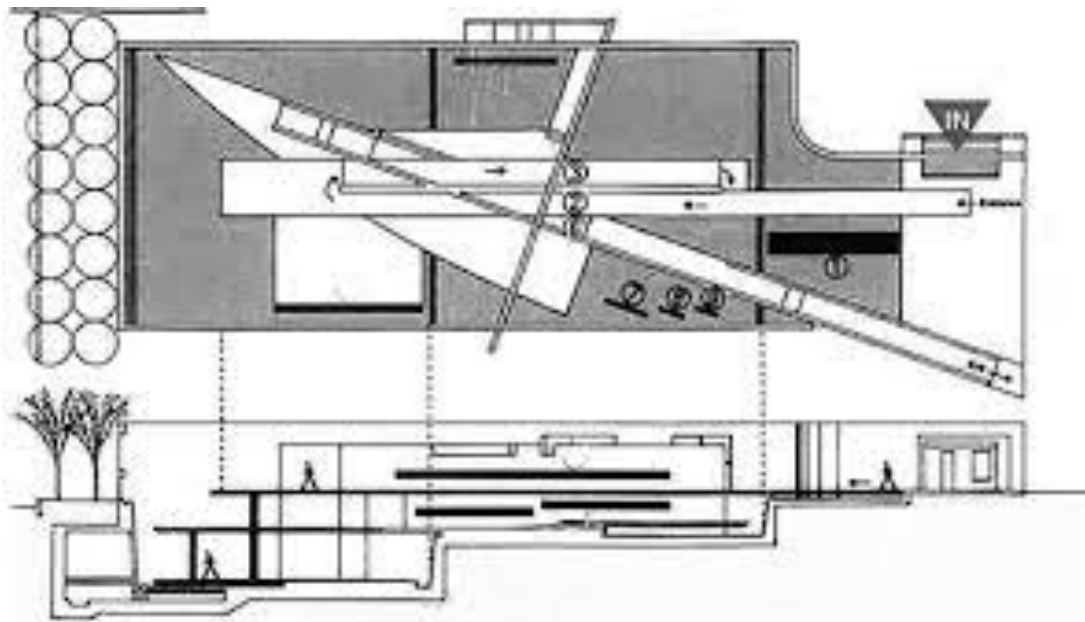
Section A-A



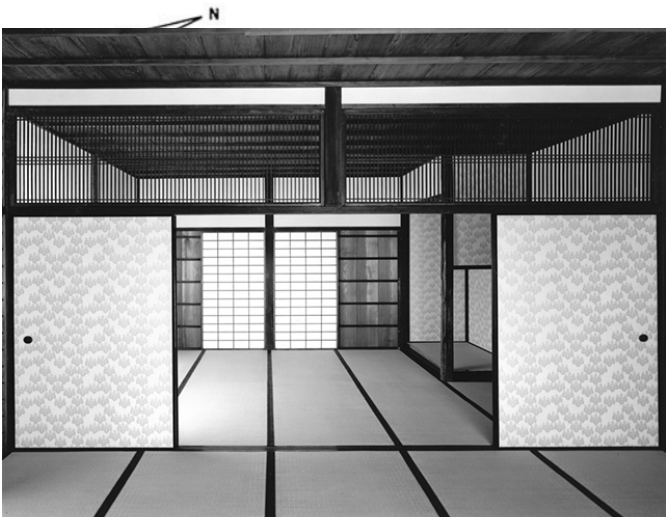
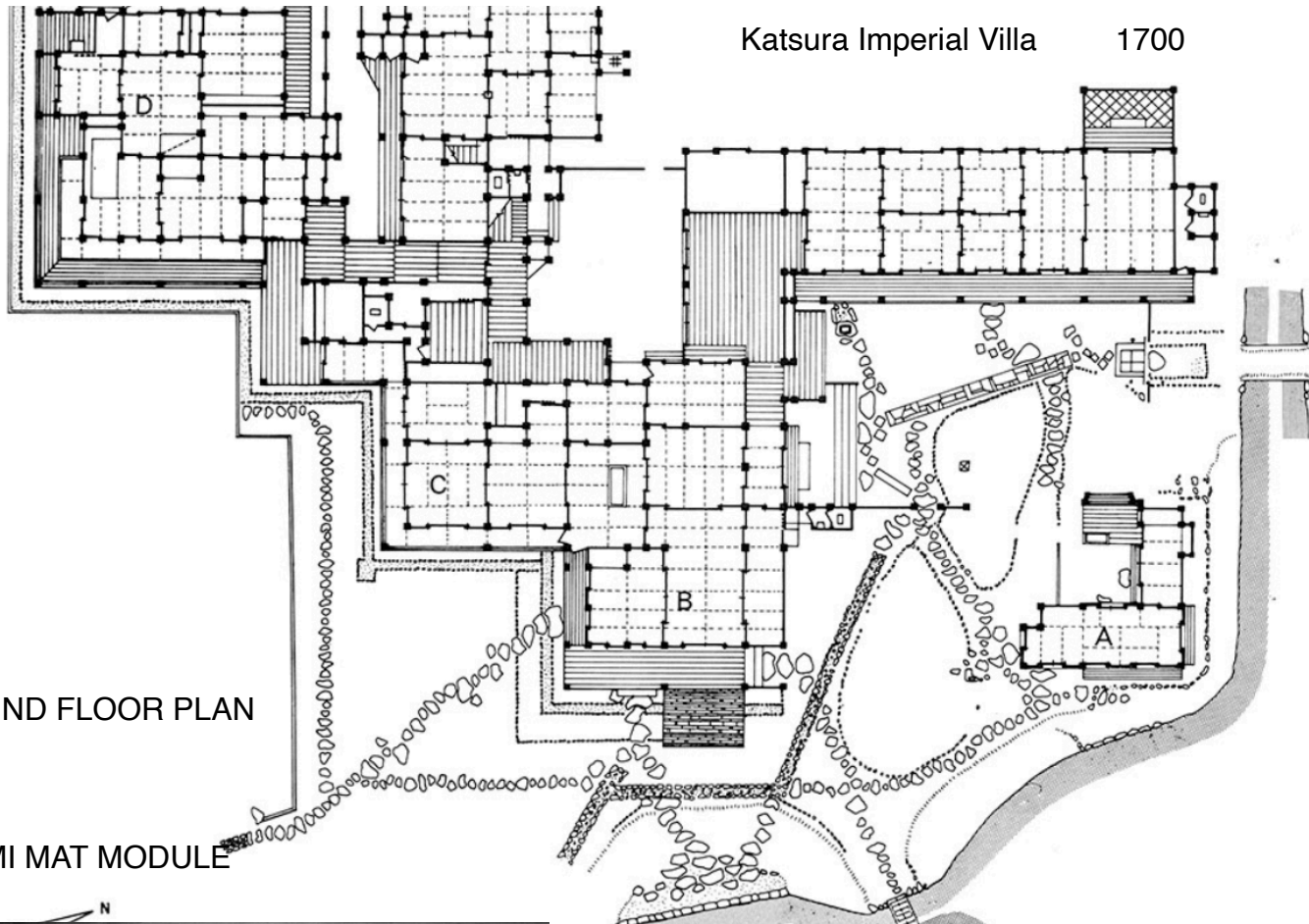
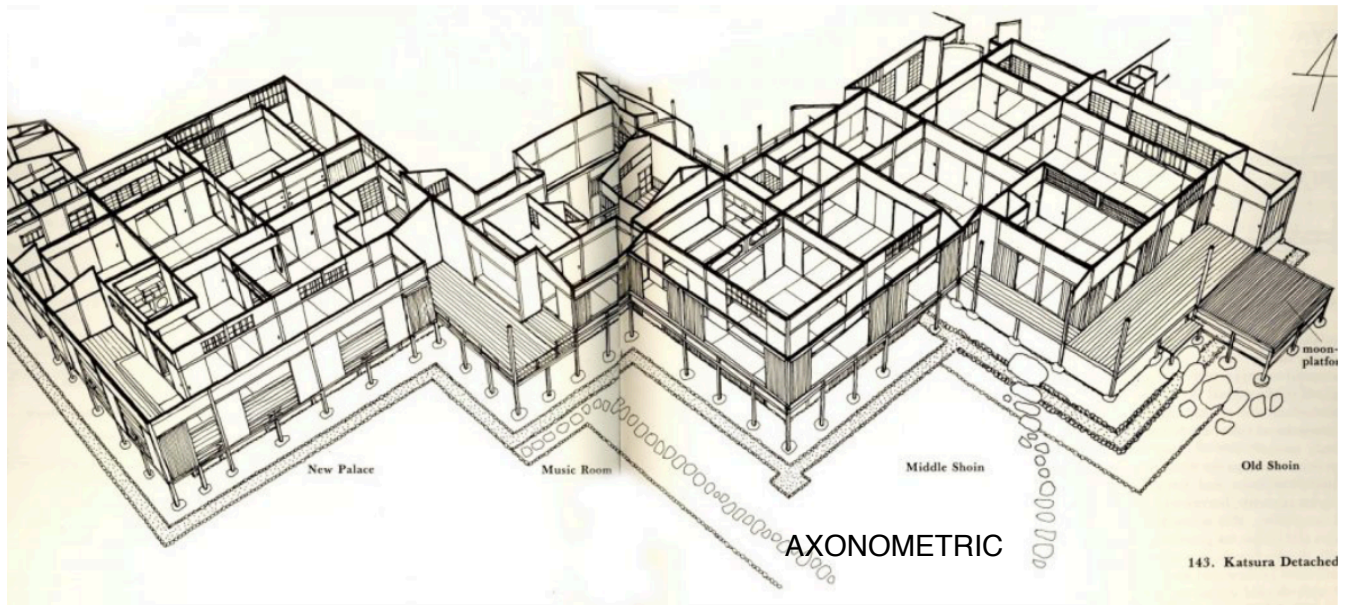
21 Koshino Hiroko. House Tadao Ando

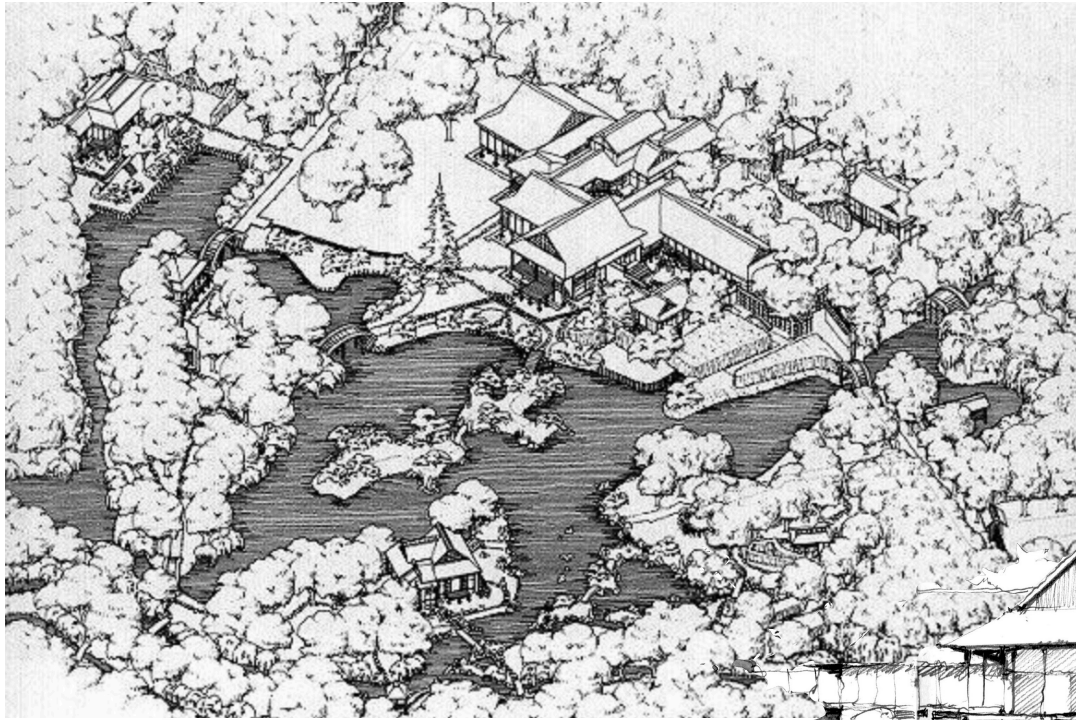


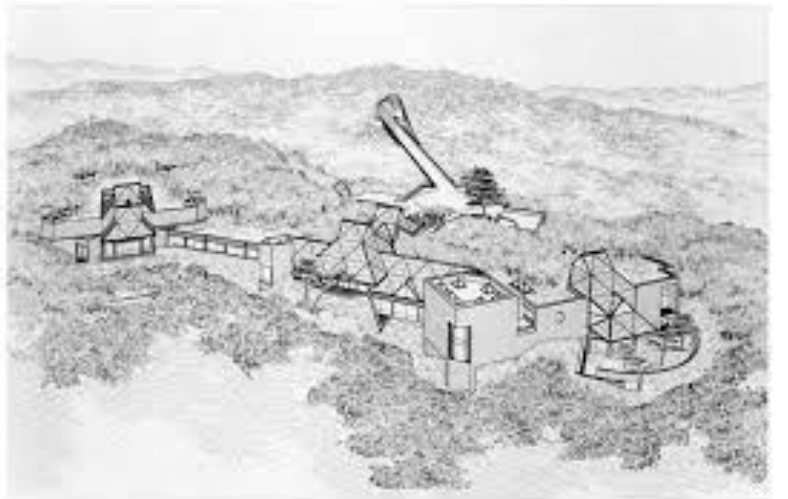
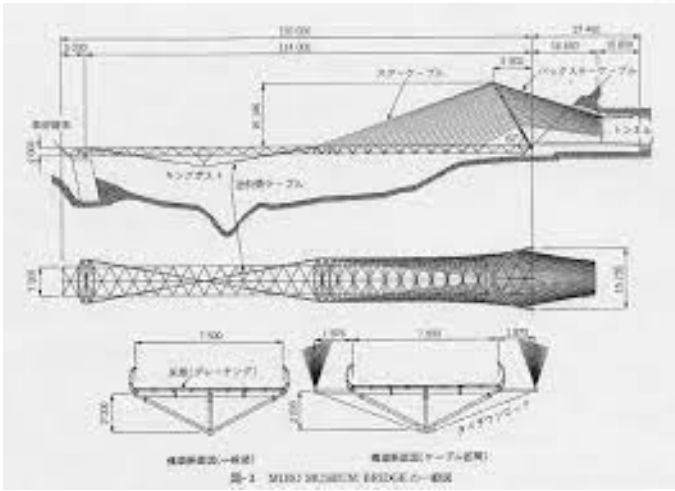
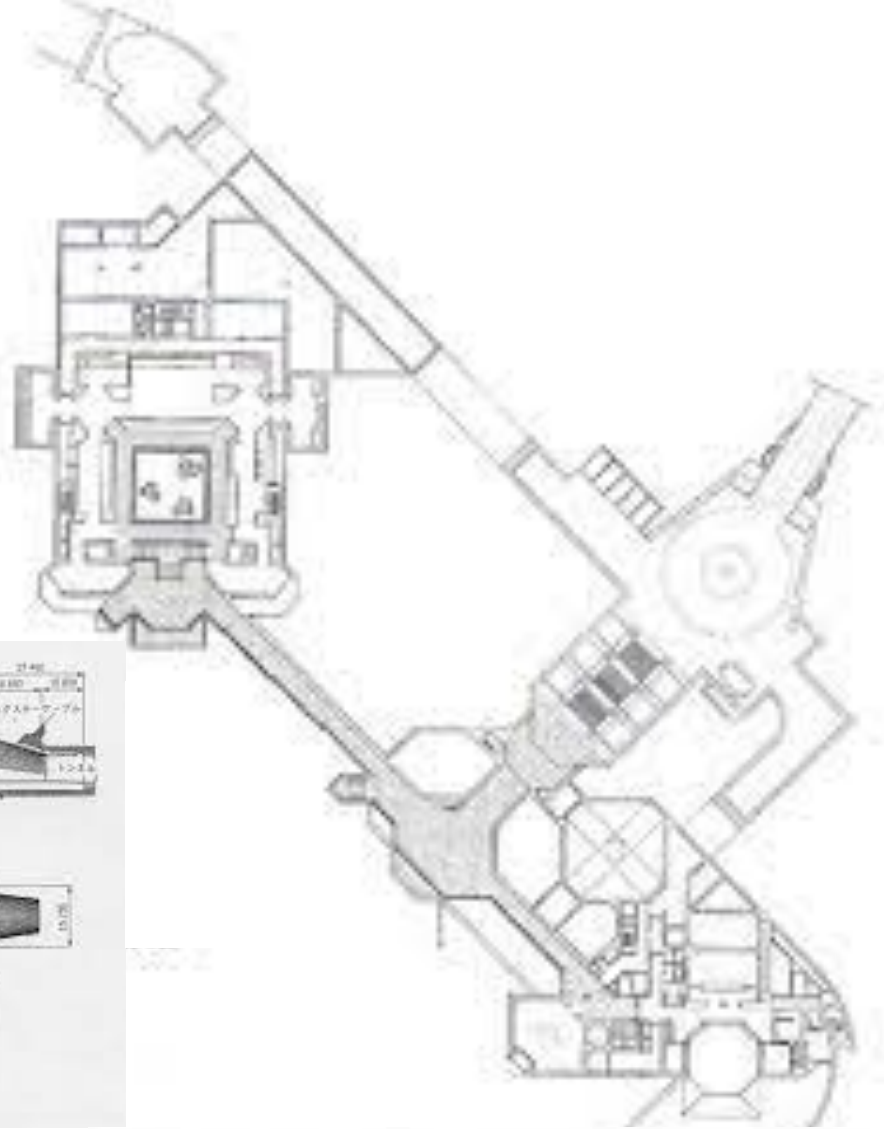


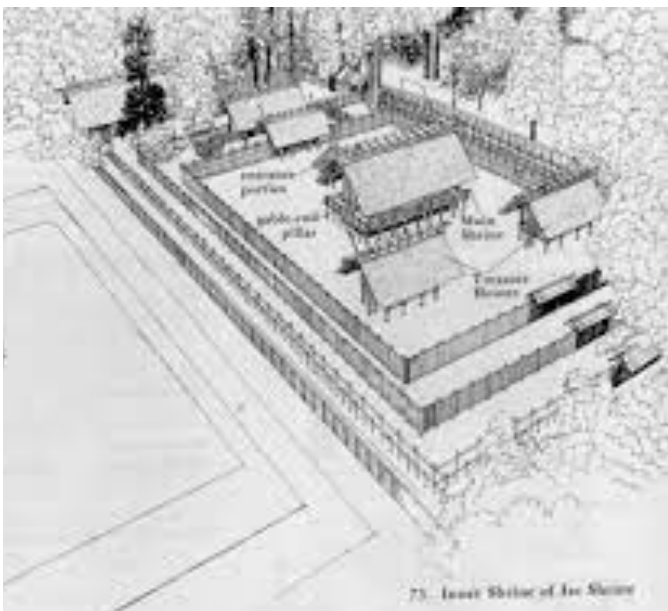
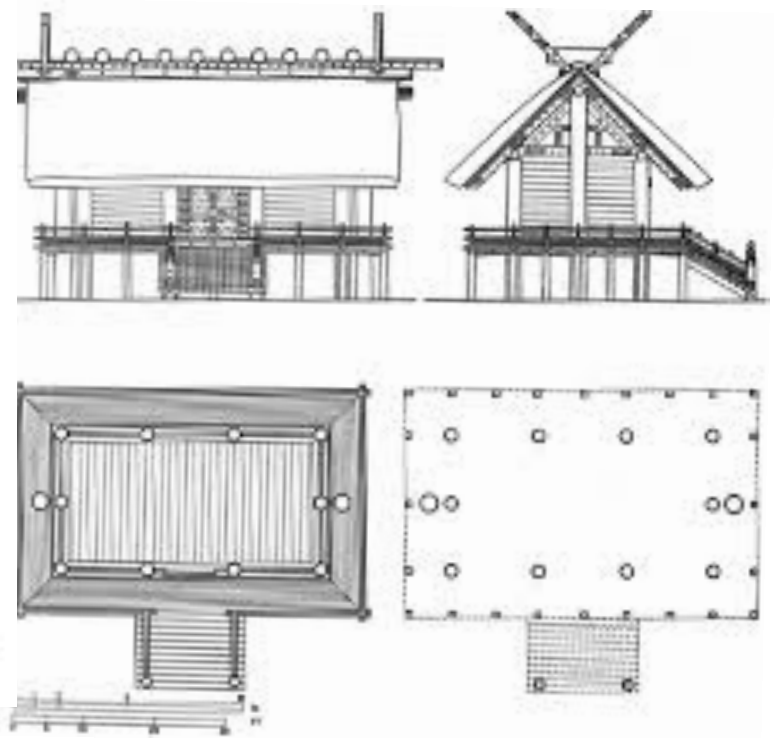
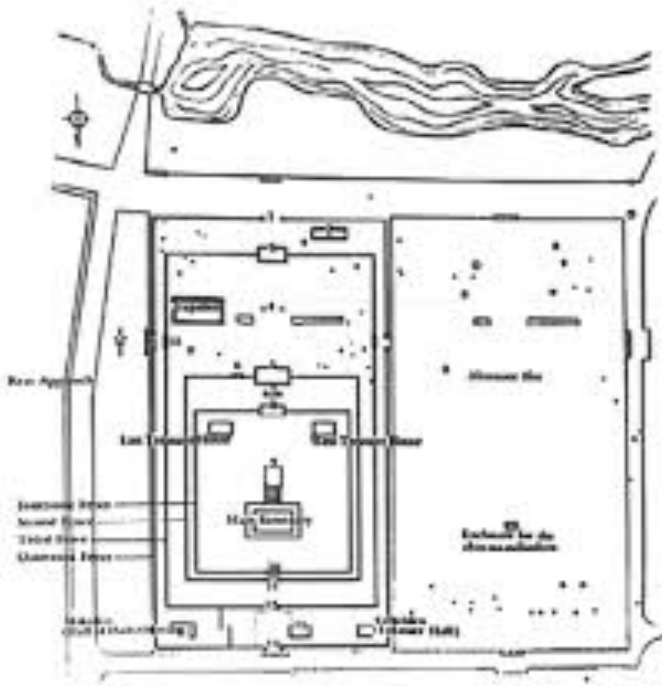


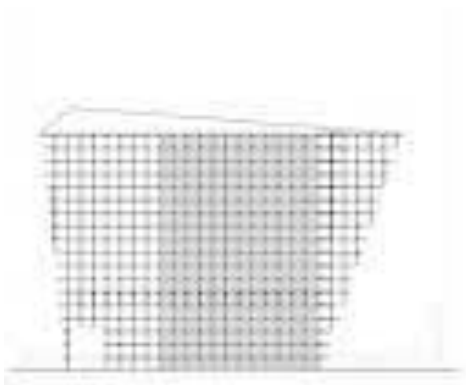
23 Garden of Fine Art Kyoto. Tadao Ando. 1994



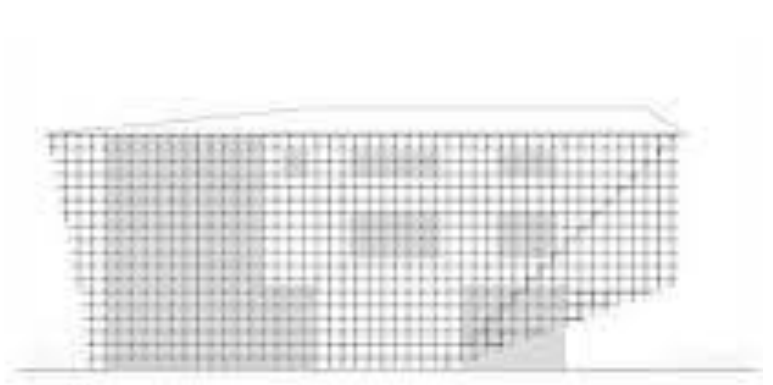




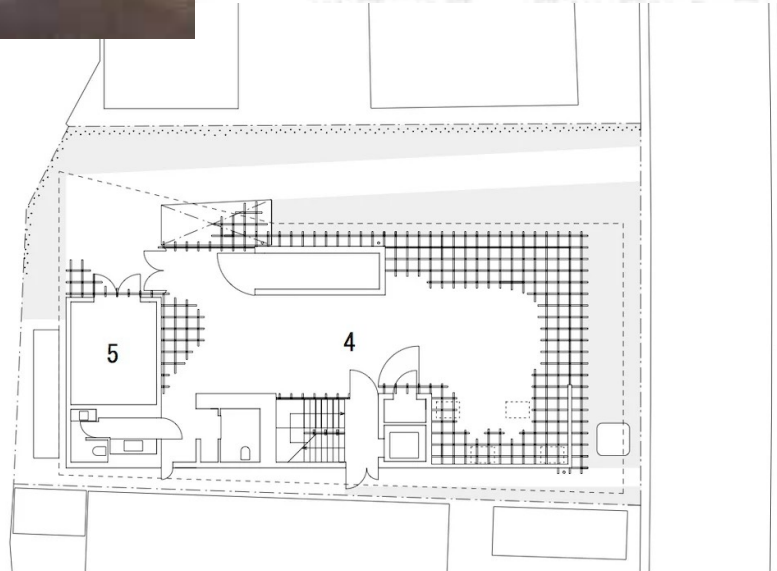
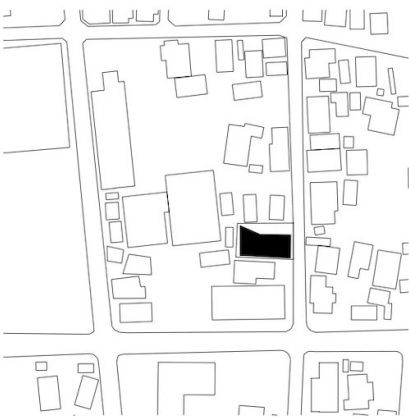
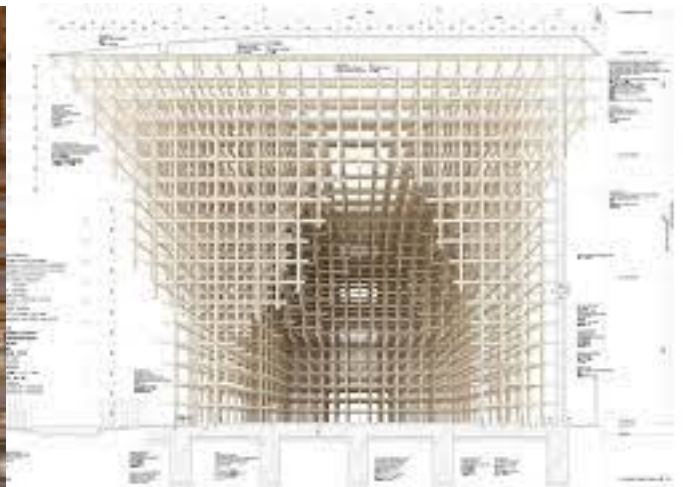




elevation

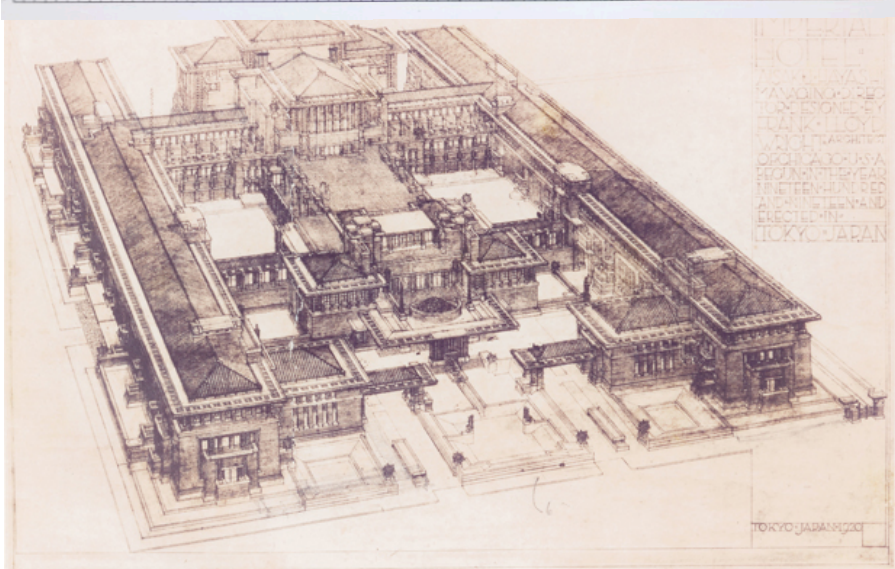
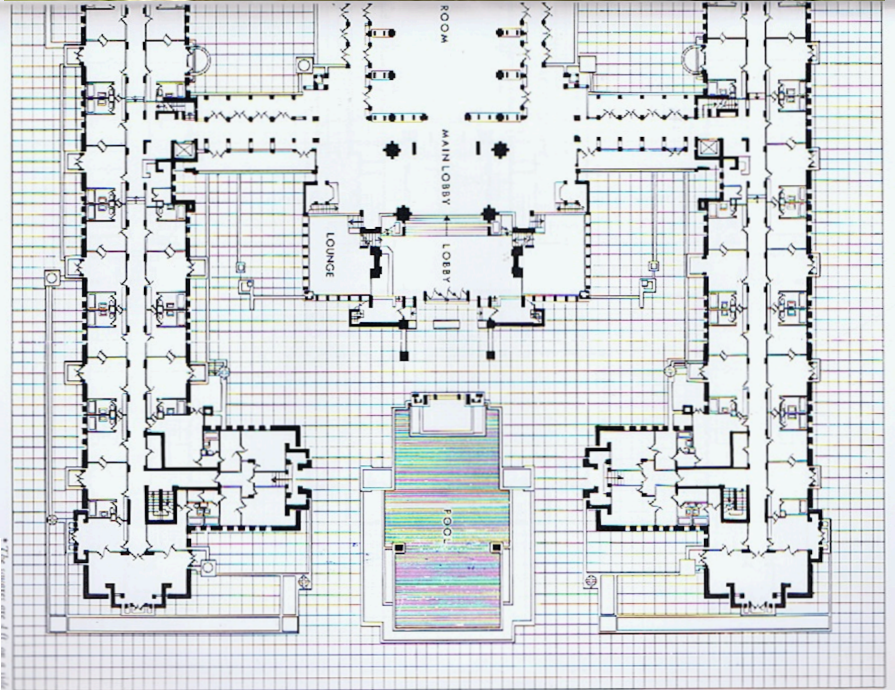
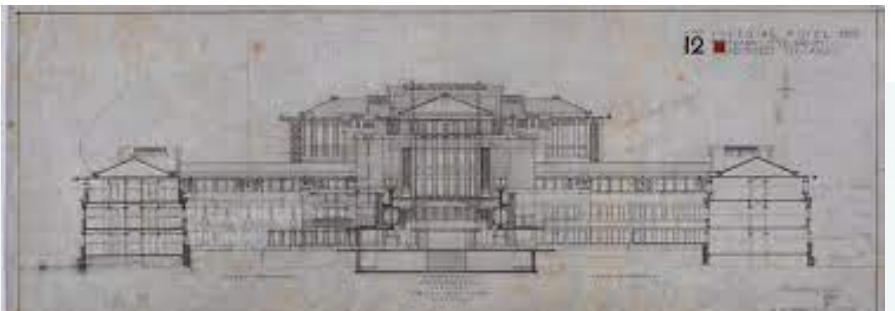


elevation

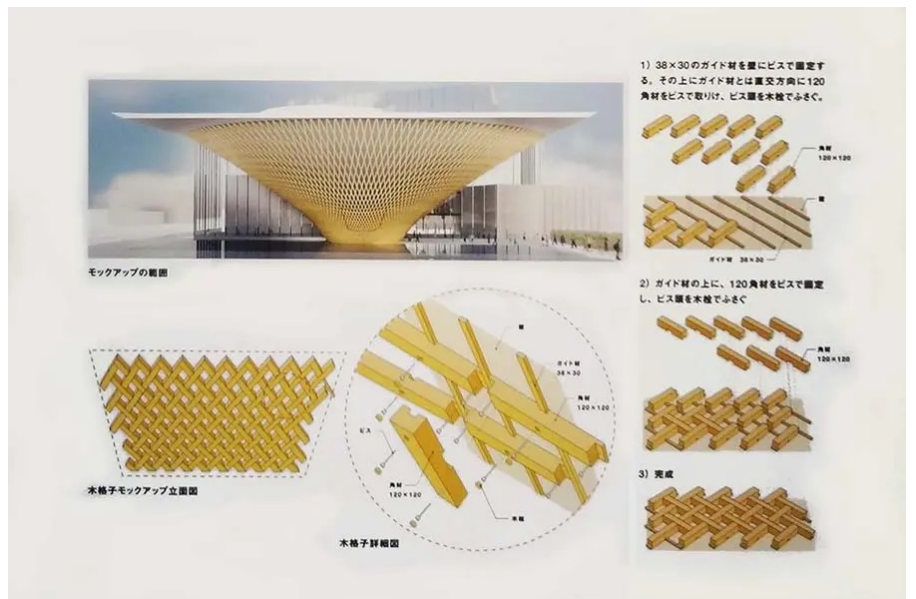
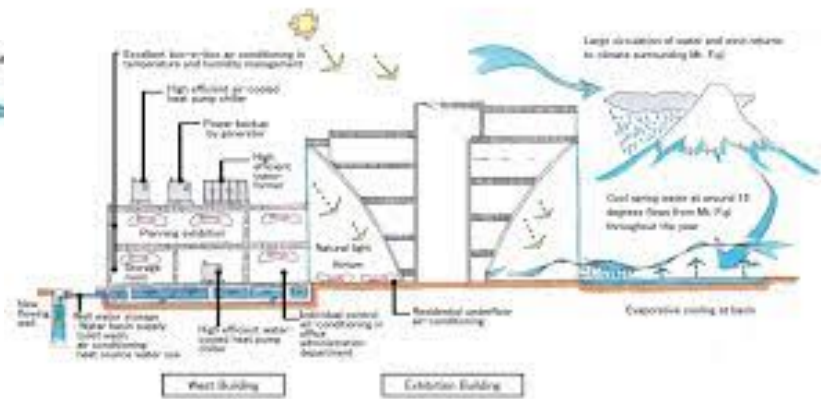
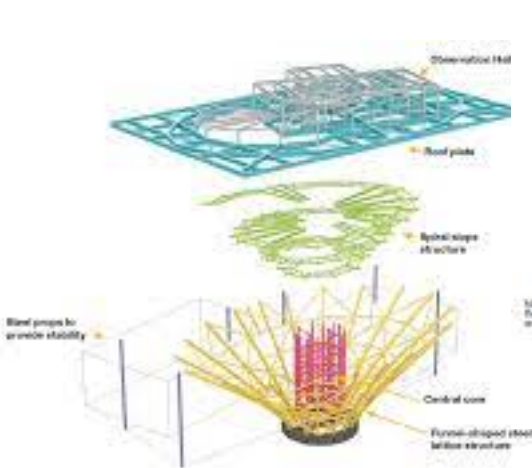
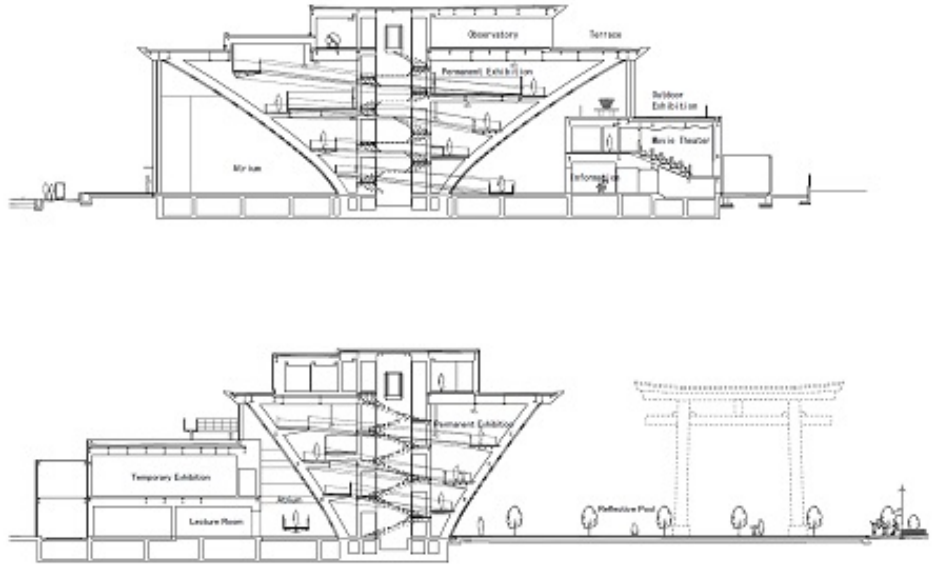
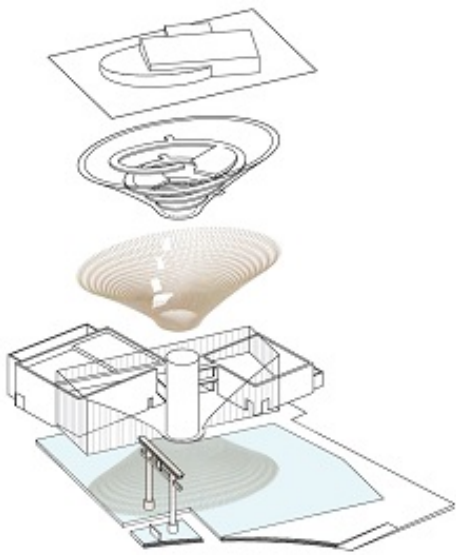


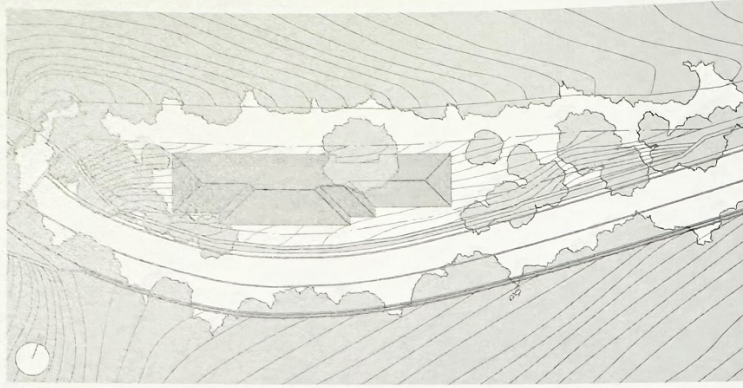
- 1 コミュニティー
- 2 文書庫
- 3 ドライエリア
- 4 ガレリア
- 5 電気室
- 6 ビューロ
- 7 ラボワール

1F 1/200

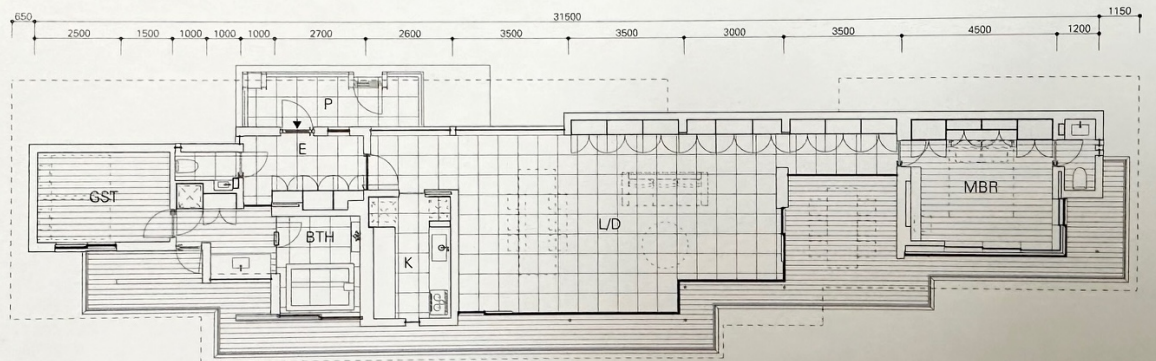


37 Imperial Hotel Tokyo Lobby. Frank Lloyd Wright 1923

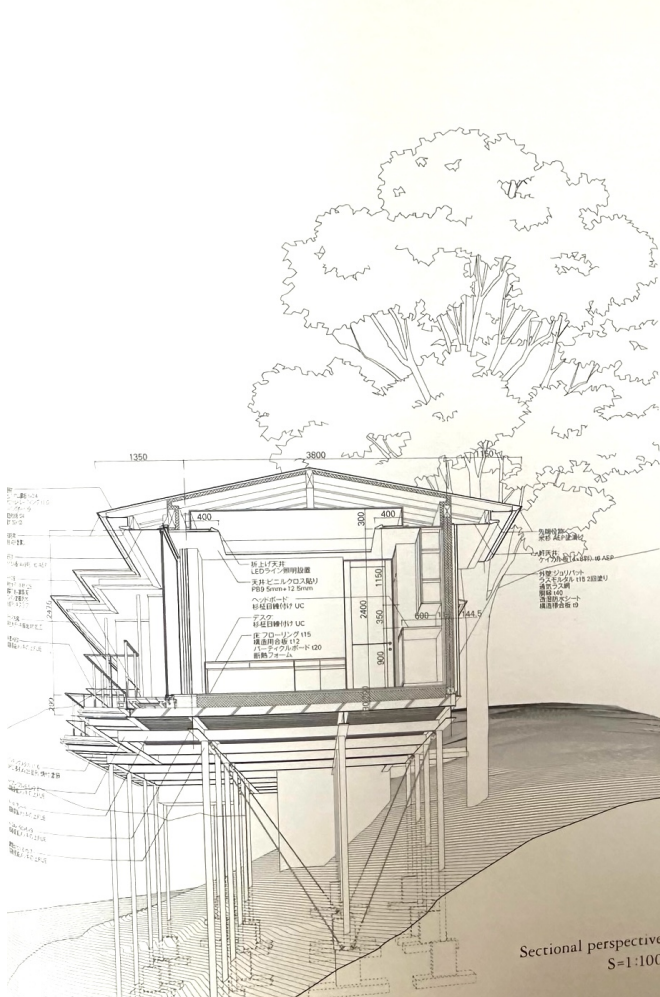




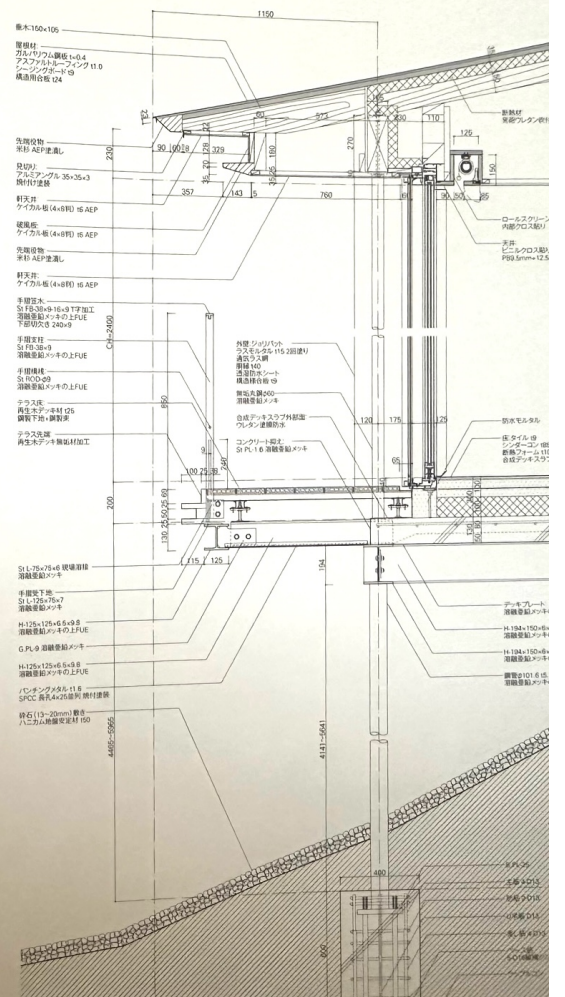
Site plan S=1:1000

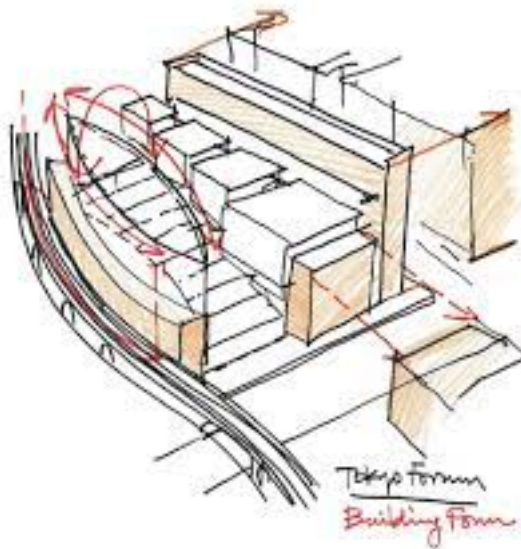
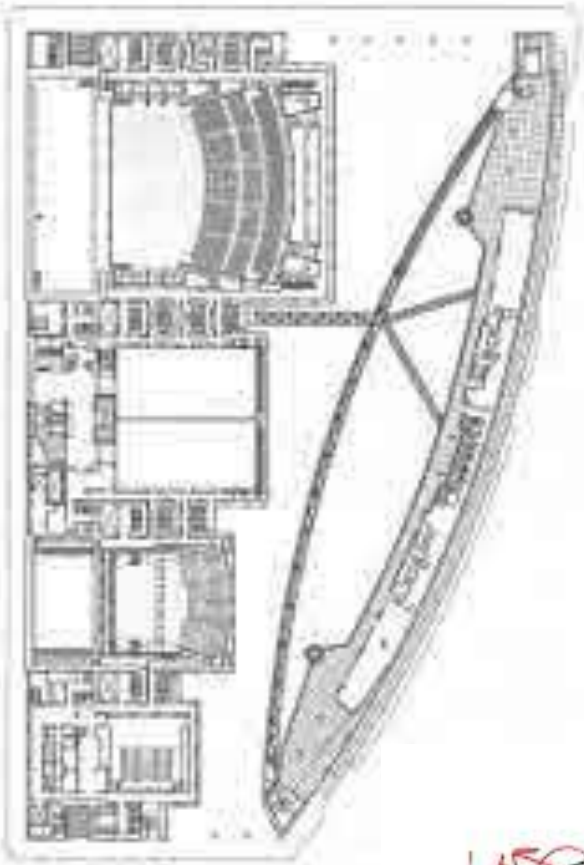


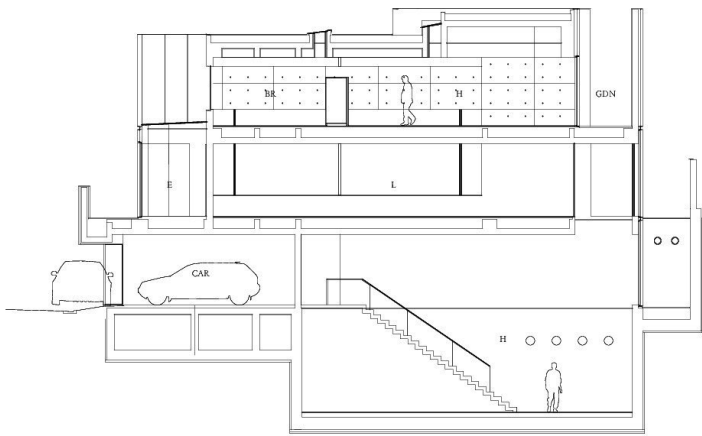
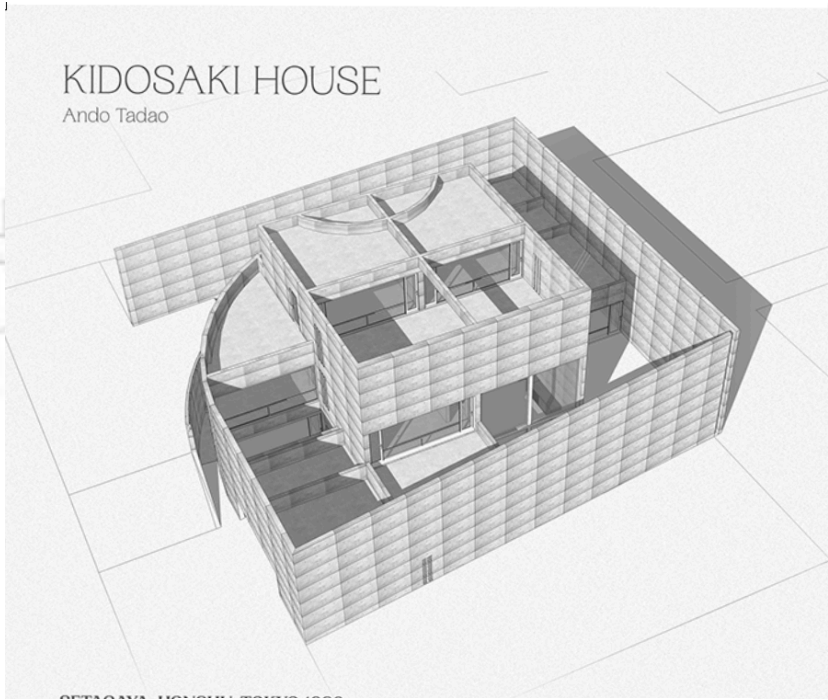
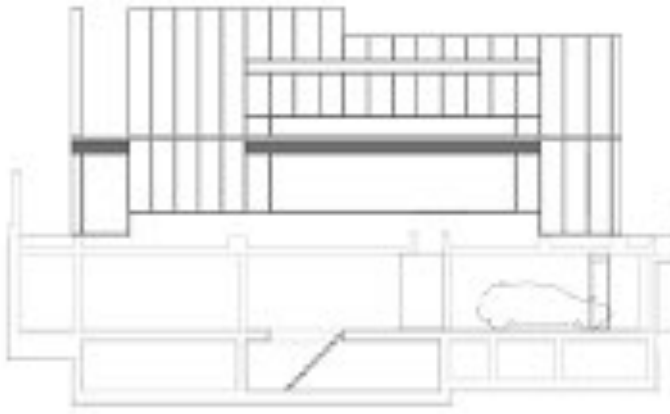
First floor S=1:250



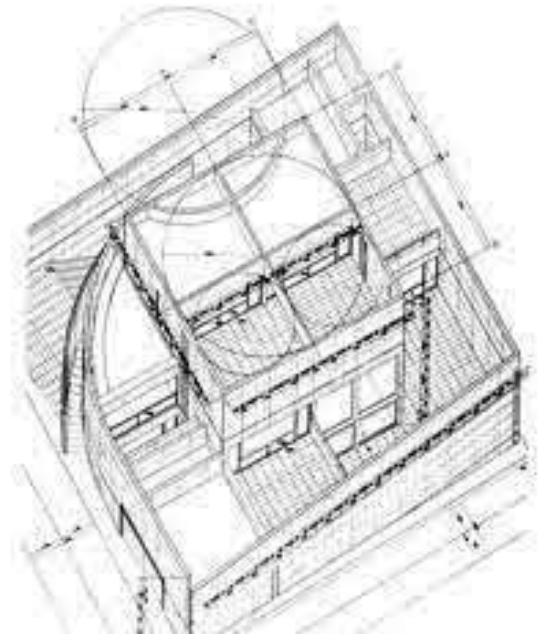
Sectional perspective S=1:100



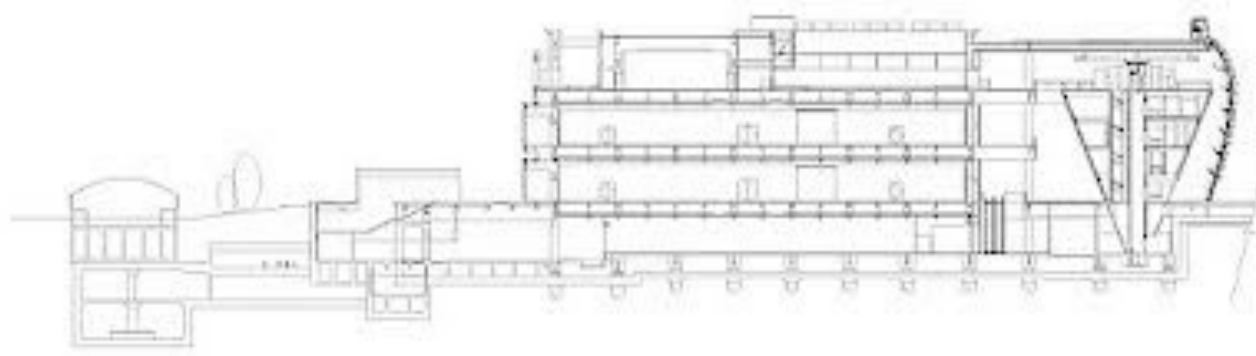
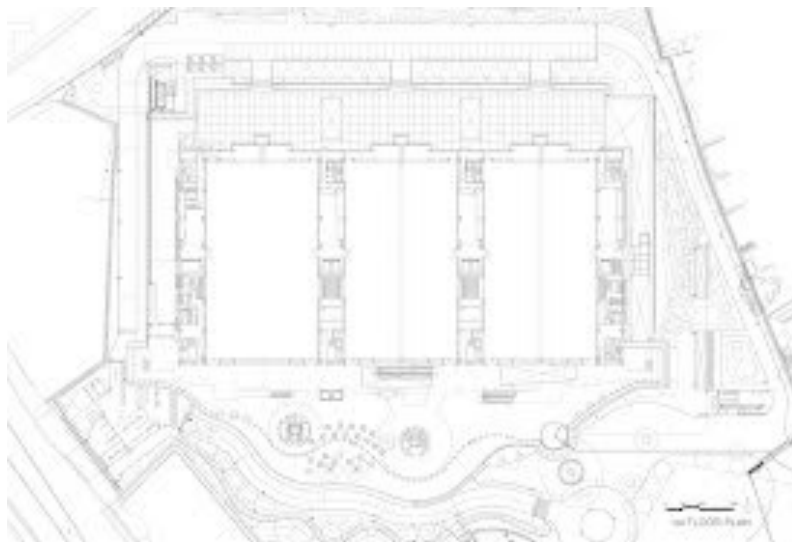




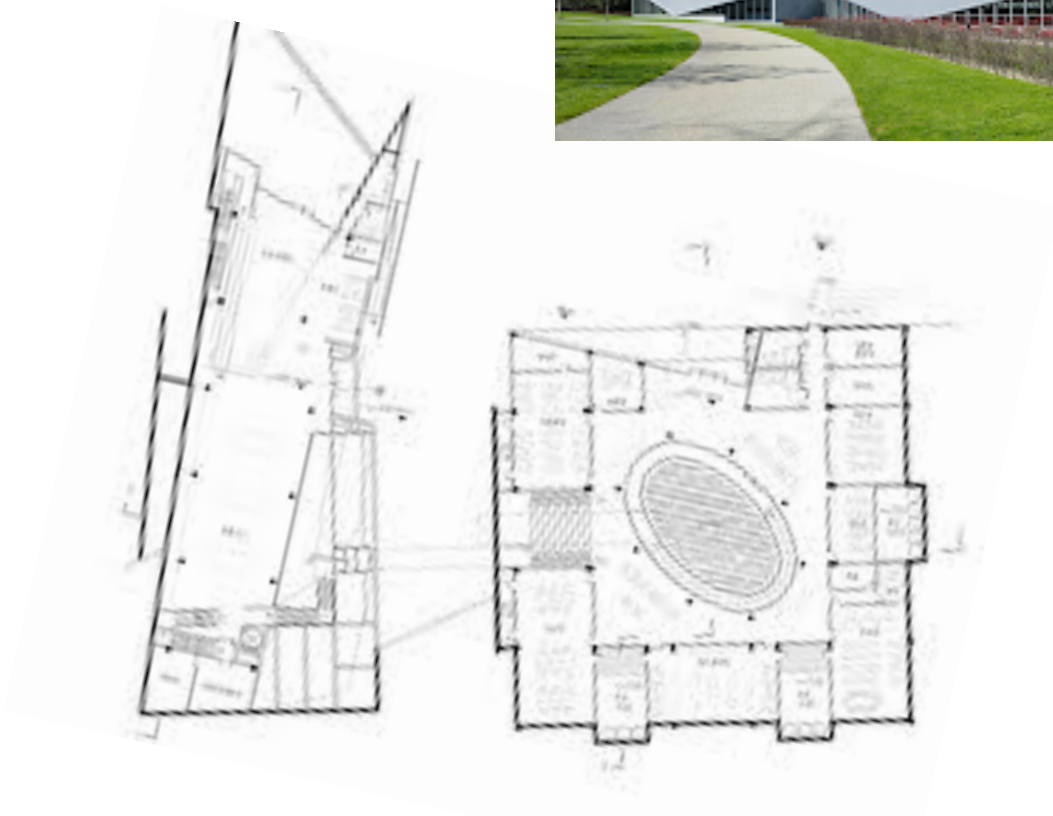
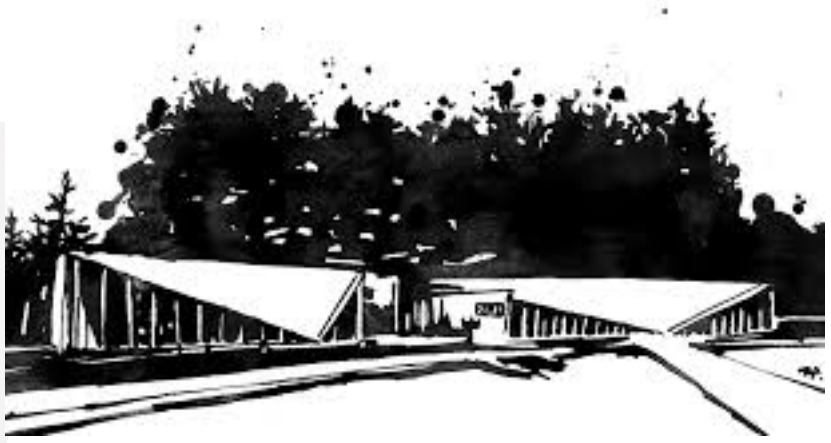
Section S=1:150



41. Hirotake Kidosaki House. Tokyo. Kidosaki Studio. 2015



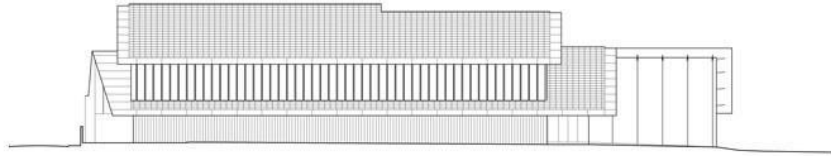
44. . National Art Centre Tokyo. Kisho Kurakawa. 2007



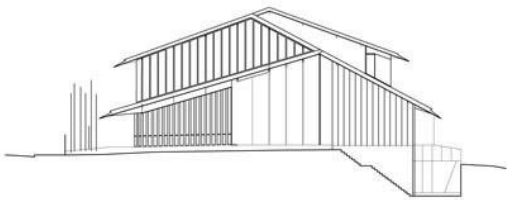
45. . Design 21 21 Tokyo. Tadao Ando. 2007



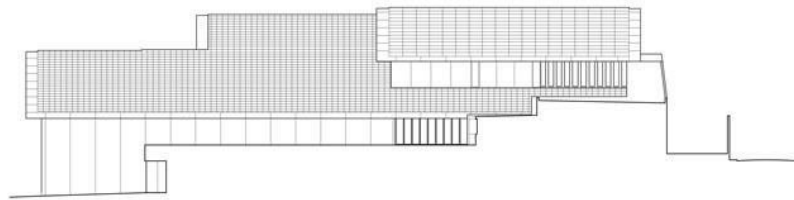
East elevation



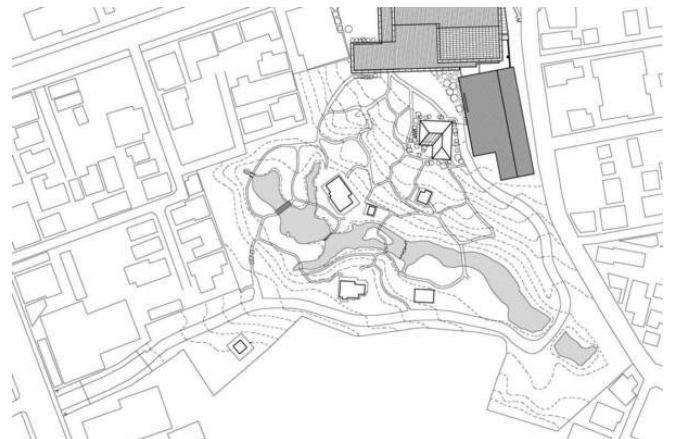
North elevation

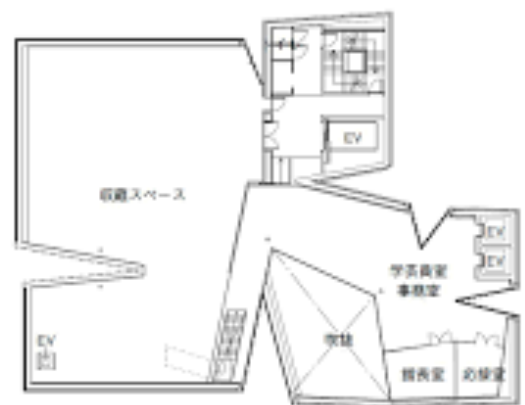
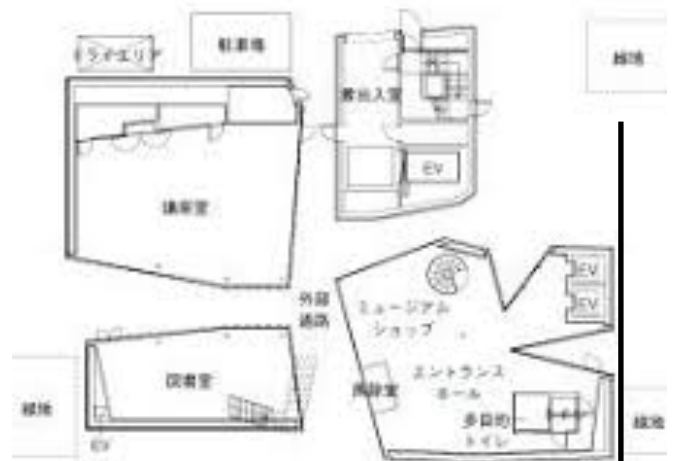


West elevation

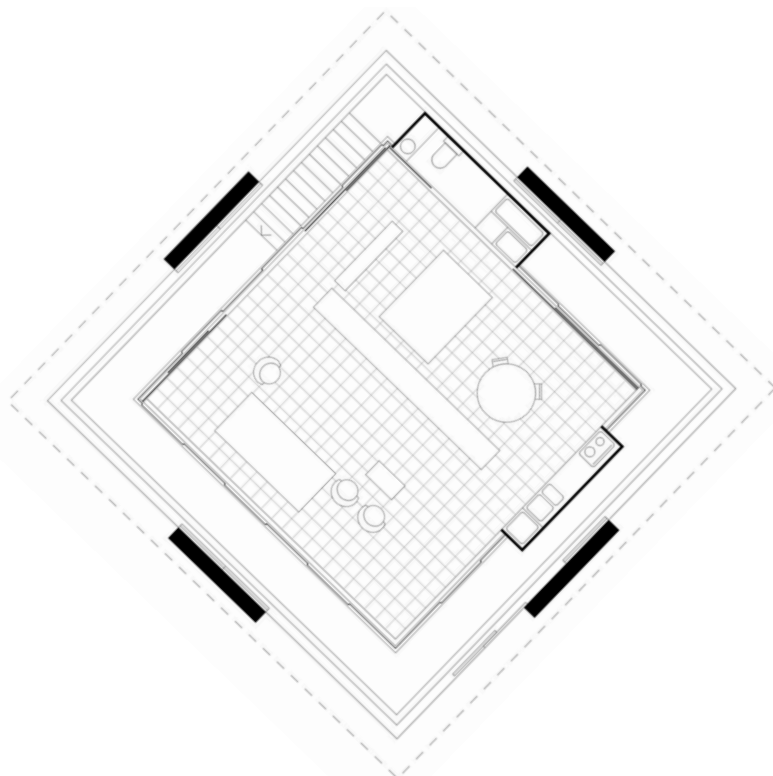
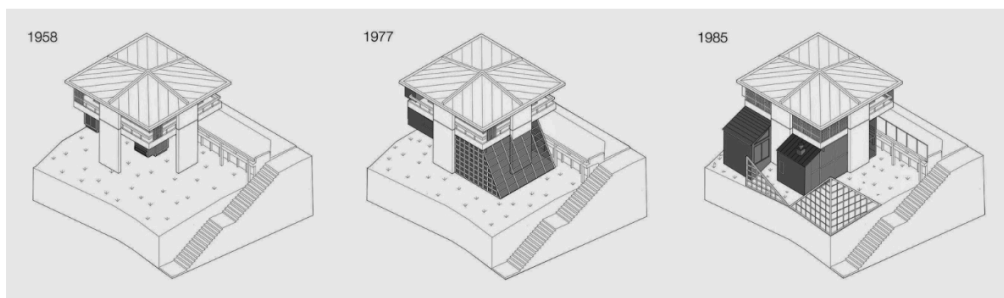
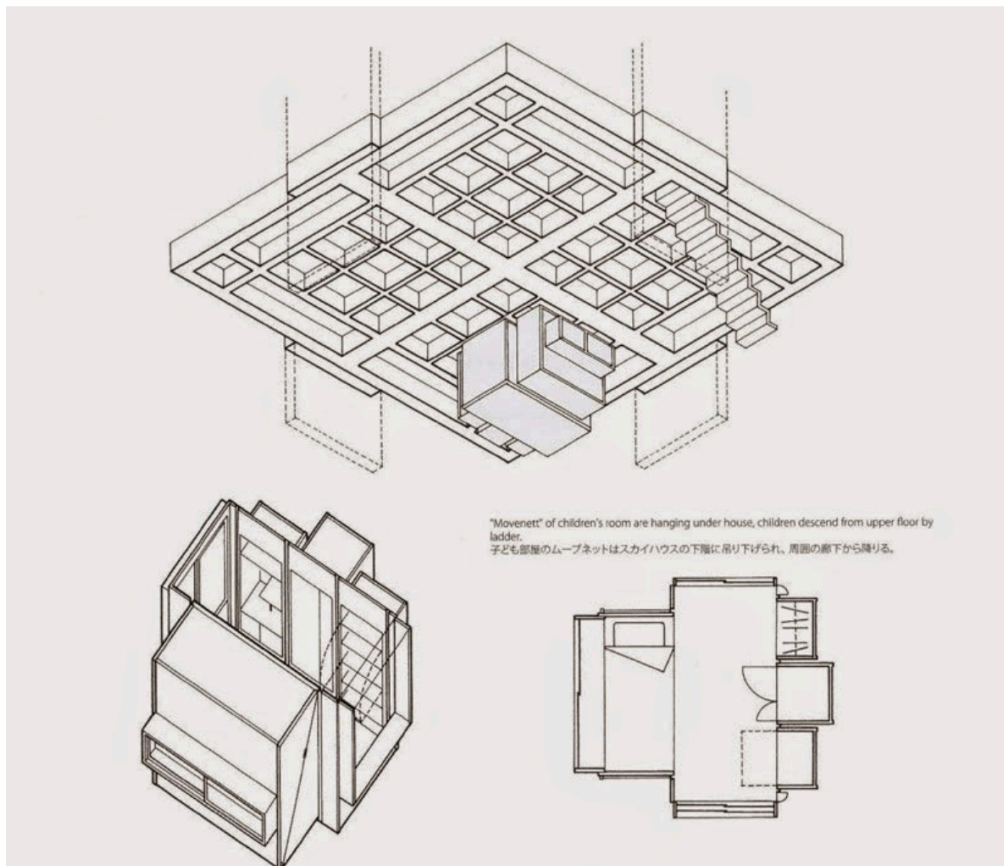


South elevation

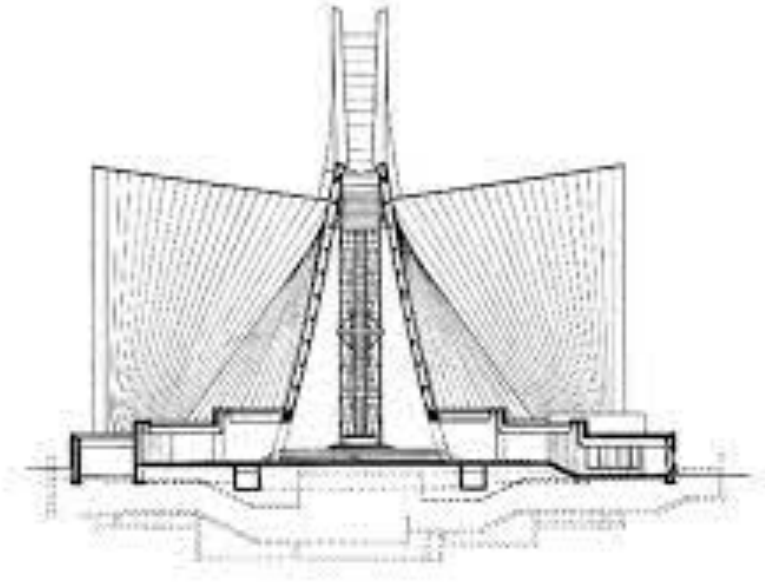
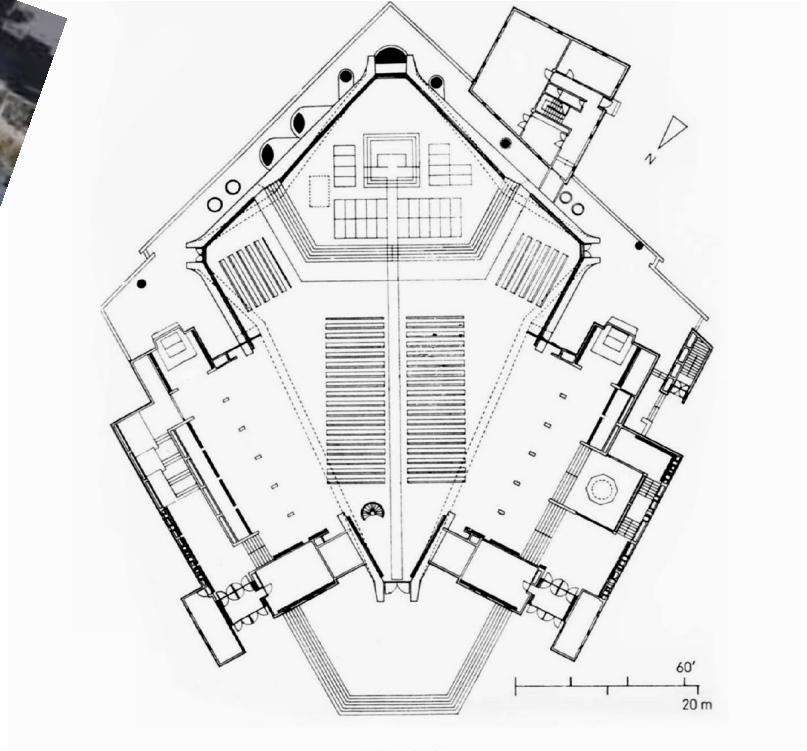
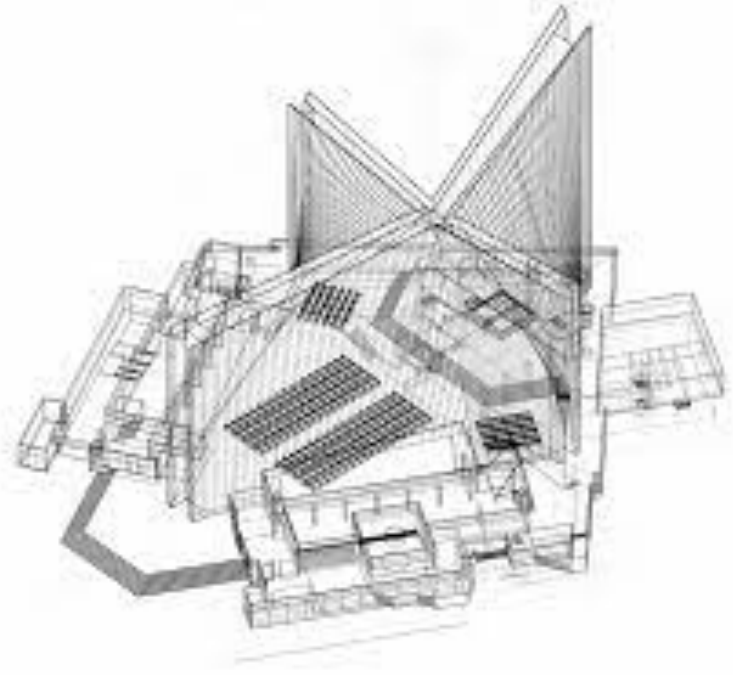




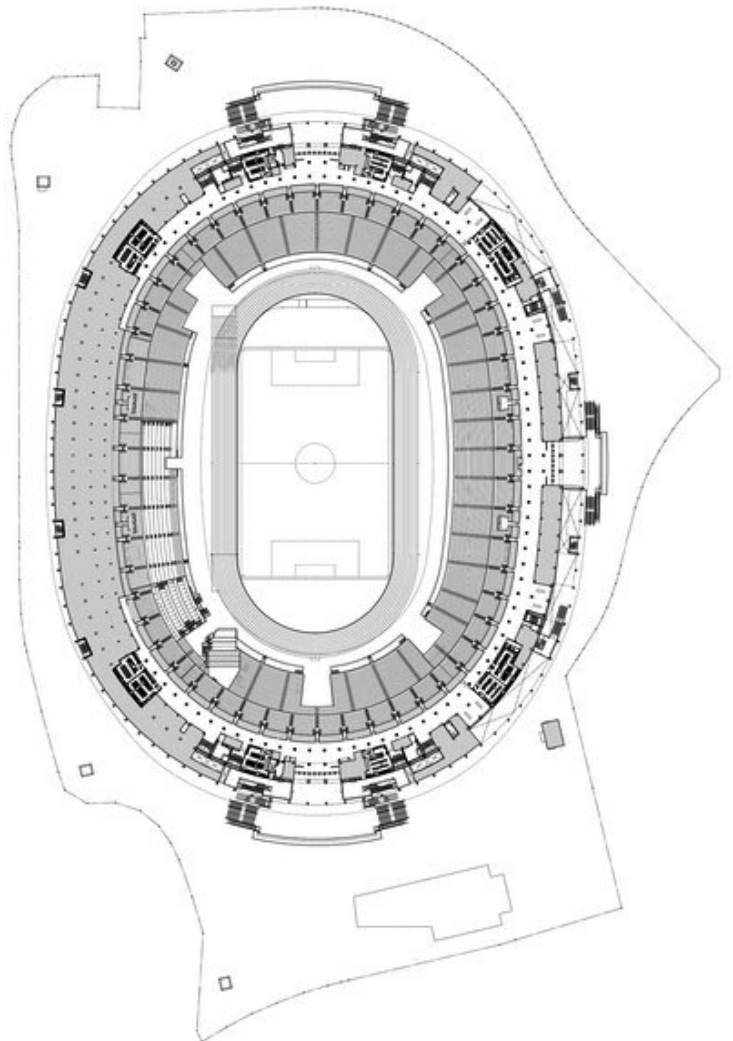
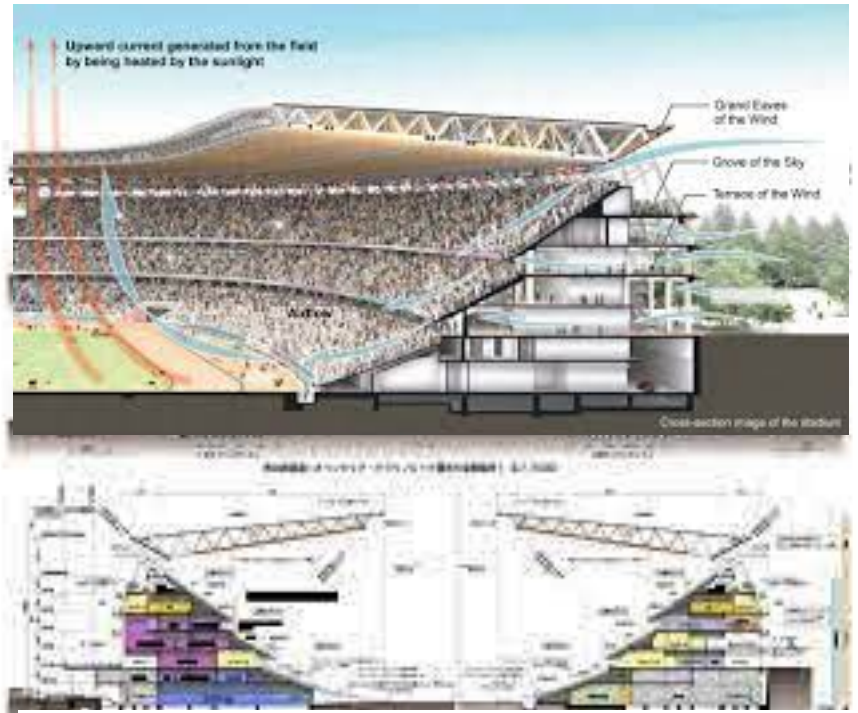
47. Sumida Hokusai Tokyo Kazuyo Sejima.(Sanaa) 2016



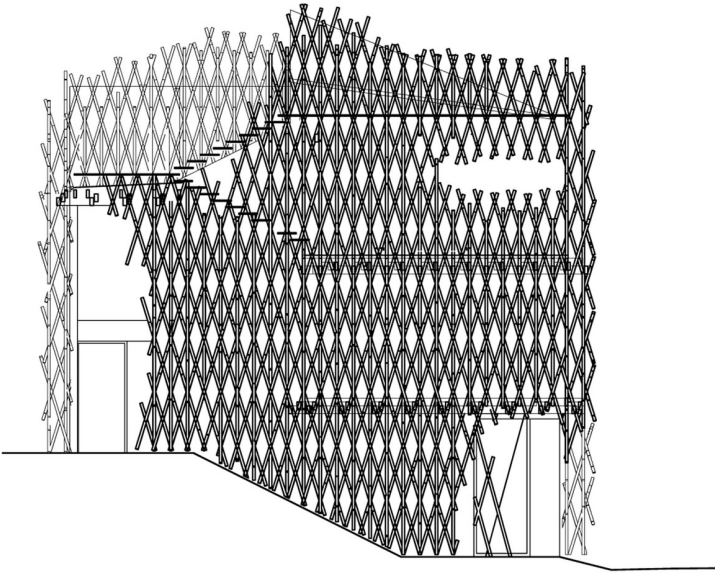
48. Sky House Tokyo Kiyonori Kitutake. 1958



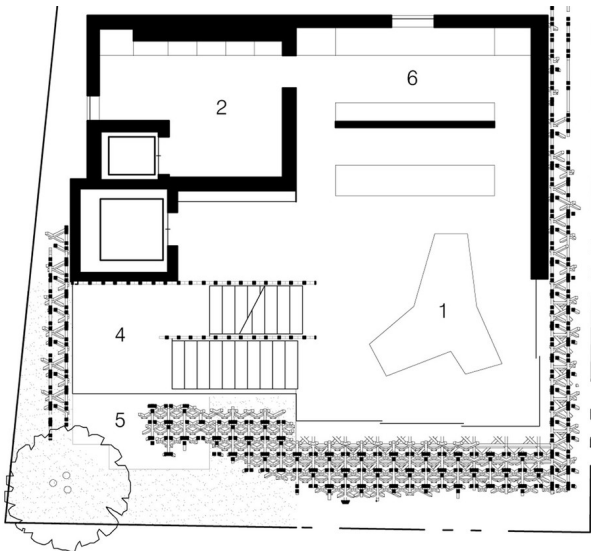
49 St Mary's Cathedral. Tokyo.
Kenzo Tange Architects 1964



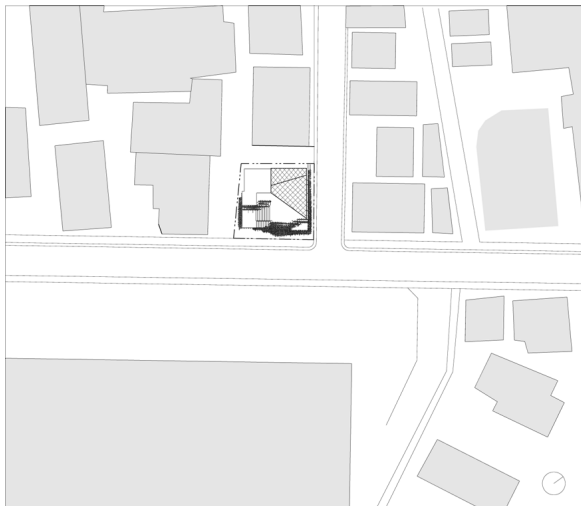
50. National Stadium Tokyo.
Kengo Kuma. 2019



東側立面図

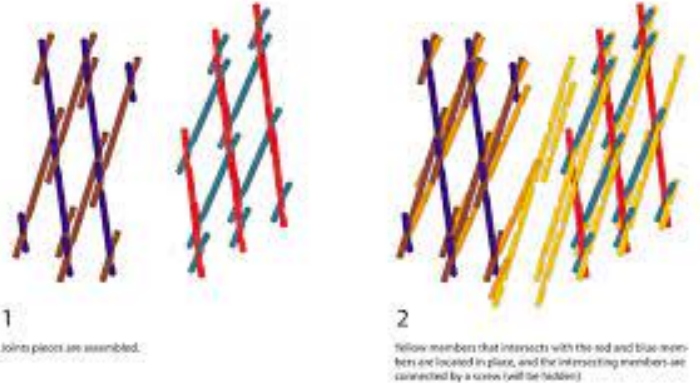


1st floor plan



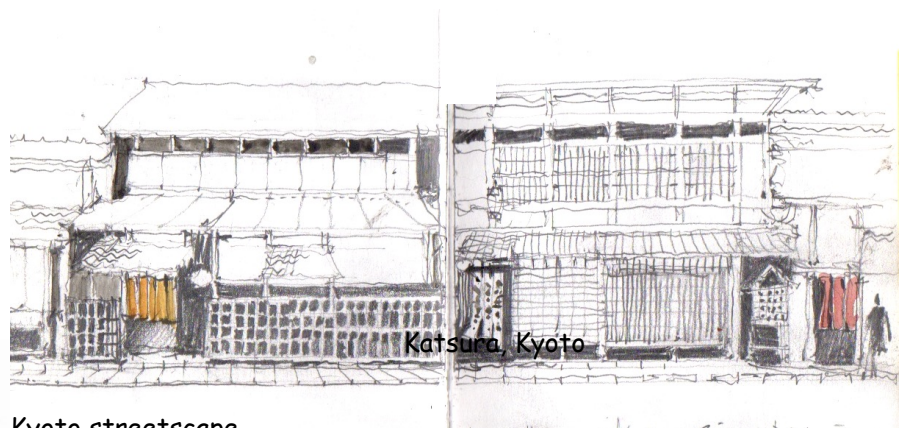
配置図 S=1/500

E facade assembly



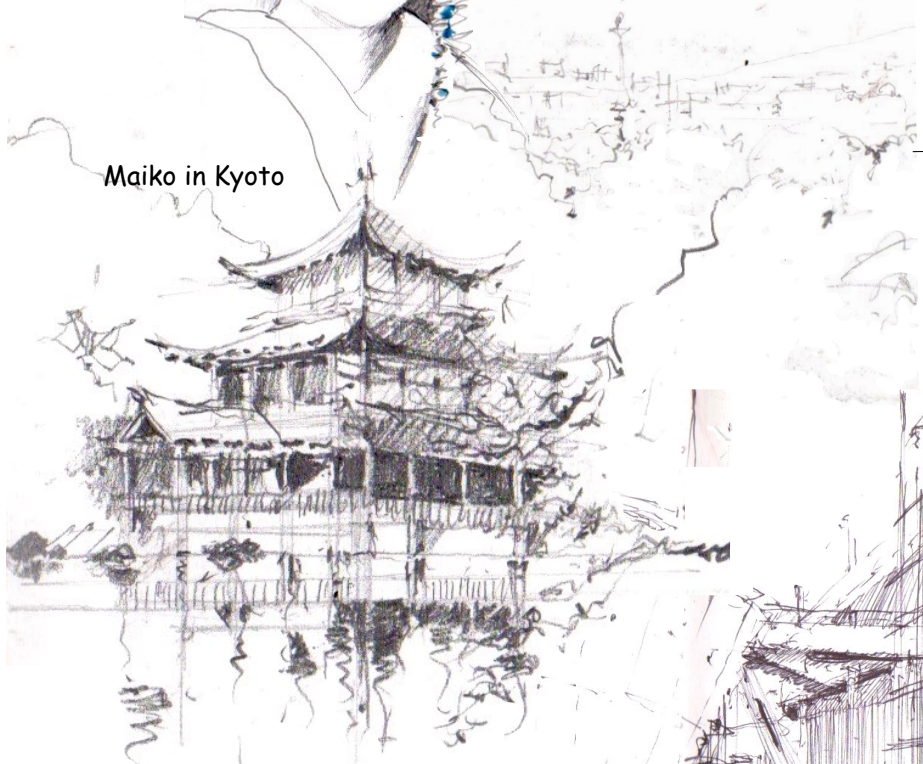
S=1/200



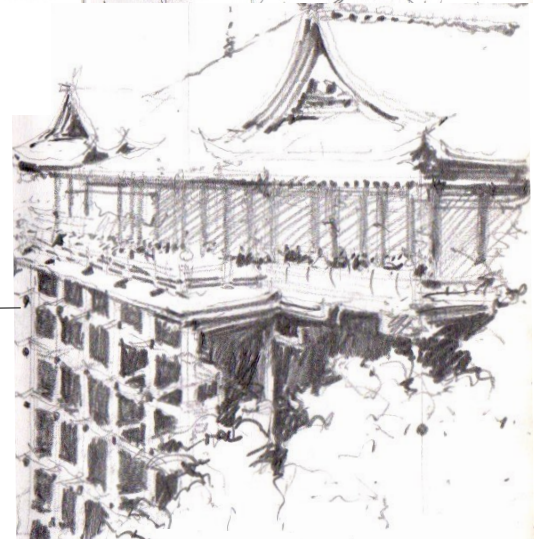


Katsura, Kyoto

Kyoto streetscape



Maiko in Kyoto

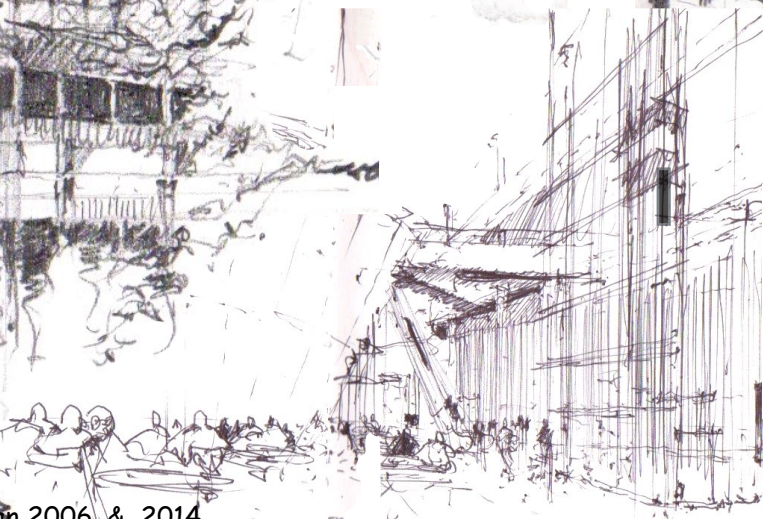


Kiyomizu-dera-Dera Temple



Doorway in Kyoto

Kinkaku ju in



National Art Centre, Tokyo

Sketches from Japan 2006. & 2014



Bring a small sketch book and try sketching along the way. Malcolm's fascination with architecture is only matched by an absolute passion for sketching. With an eye for simplification of detail and an obsession with light, he draws constantly in sketchbooks during his tours of painting, teaching and travelling. He is always seeking to capture moments by taking a line for a walk, with discrete care to suggest rather than state. His article in 'International Artist' June 2012 on 'The Art of Seeing' can be downloaded from his [website](#) and may help anyone, to learn how to sketch along the way. Picasso said "Sketching is another way of keeping a diary" (Picasso). Also watch You Tube [Colour in Your Life Video](#) & [The Art of Watercolour French Article](#) 2019.



TRAVELRITE
INTERNATIONAL

Travelrite International Pty Ltd
423 Whitehorse Road Balwyn
Victoria Australia 3103

Toll Free 1800 630 343

sales@travelrite.com.au

W www.travelrite.com.au/arc.shtml

Wendy Carver

+61 412 416 535

wcarver2912@icloud.com

Malcolm Carver

+61 412 329 987

mcarver@me.com

W carverstudio.com